



Government of Rajasthan

**MONTHLY BULLETIN
OF
PRICES
IN
RAJASTHAN**

MARCH, 2025



**Directorate of Economics & Statistics,
Statistics Department, Rajasthan
Yojana Bhawan, Tilak Marg, C-Scheme, Jaipur (302005)**

MONTHLY BULLETIN OF PRICE INDICES & IT'S TREND IN RAJASTHAN FOR THE MONTH OF MARCH, 2025

Under the Monthly Price Review for the month of MARCH, 2025 the State Wholesale Price Index (Base 1999-2000=100) and Monthly Retail Price Review of 39 Essential Commodities in Rajasthan released by the Department in the review of the month as well as the Rajasthan State and All India Consumer Price Index (Rural, Urban and Combined) released by the National Statistical Office, Ministry of Statistics & Programme Implementation, New Delhi and Consumer Price Index (Industrial Workers) released by Labour Bureau, Chandigarh has been included.

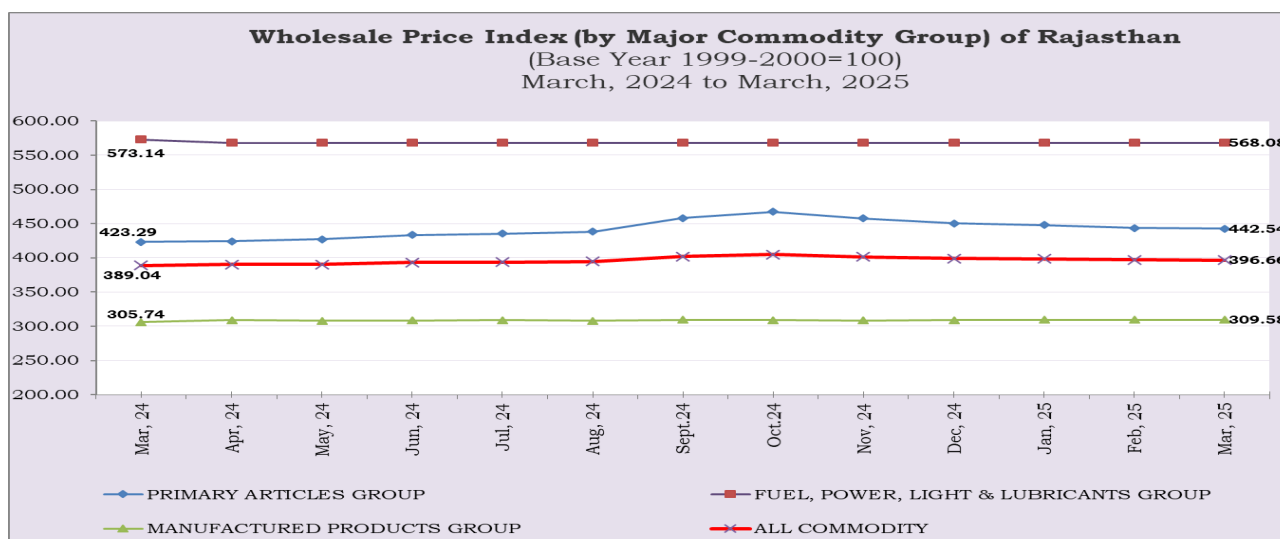
1. INDEX NUMBER OF WHOLESALE PRICE (WPI) IN RAJASTHAN (B.Y. 1999-2000=100)

THE ANNUAL RATE OF INFLATION (Year on Year %):

The General Index of Wholesale Price in Rajasthan stood at 396.66 (Final) end of MARCH, 2025 which was 389.04 in MARCH, 2024. The annual rate of inflation on the above basis stood at 1.96 percent for the month of MARCH, 2025 (over MARCH, 2024) against 2.09 percent recorded in February, 2025. The inflation rate for the month of March, 2025 has registered an decrease as compared to the month of February, 2025. The main reason for this is the decrease from March 2025 of 5.56 to 4.55 percent in the prices of the Primary Articles group during the month. In the last three months 2.26 percent in January, 2025, 2.09 percent in February, 2025 and 1.96 percent in March, 2025 respectively as compared to the same month of last year. The annual change in the components of WPI index and inflation in the last three months is given below table.

Wholesale Price Index (by Major Commodity Group) of Rajasthan for the month of MARCH, 2025								
(Base year 1999-2000=100)								
Index Numbers & Annual Rate of Inflation (Y-o-Y in %)								
S. No.	Major Group/ Subgroup	Weight	JANUARY, 2025		FEBRUARY, 2025		MARCH, 2025 (F)	
			Index	Inflation	Index	Inflation	Index	Inflation
1	2	3	8	9	8	9	8	9
1	Primary Articles	33.894	447.69	6.05	443.49	5.56	442.54	4.55
	(A)- Agricultural Articles	29.933	441.97	6.75	437.07	6.25	436.59	5.26
	(B)- Minerals	3.961	490.95	1.56	491.95	1.17	487.50	-0.04
2	Fuel, Power, Light & Lubricants	16.253	568.11	-2.27	568.11	-2.26	568.08	-0.88
3	Manufactured Products	49.853	309.32	1.50	309.46	1.55	309.58	1.26
General Index (All Commodities)		100.00	398.28	2.26	396.93	2.09	396.66	1.96

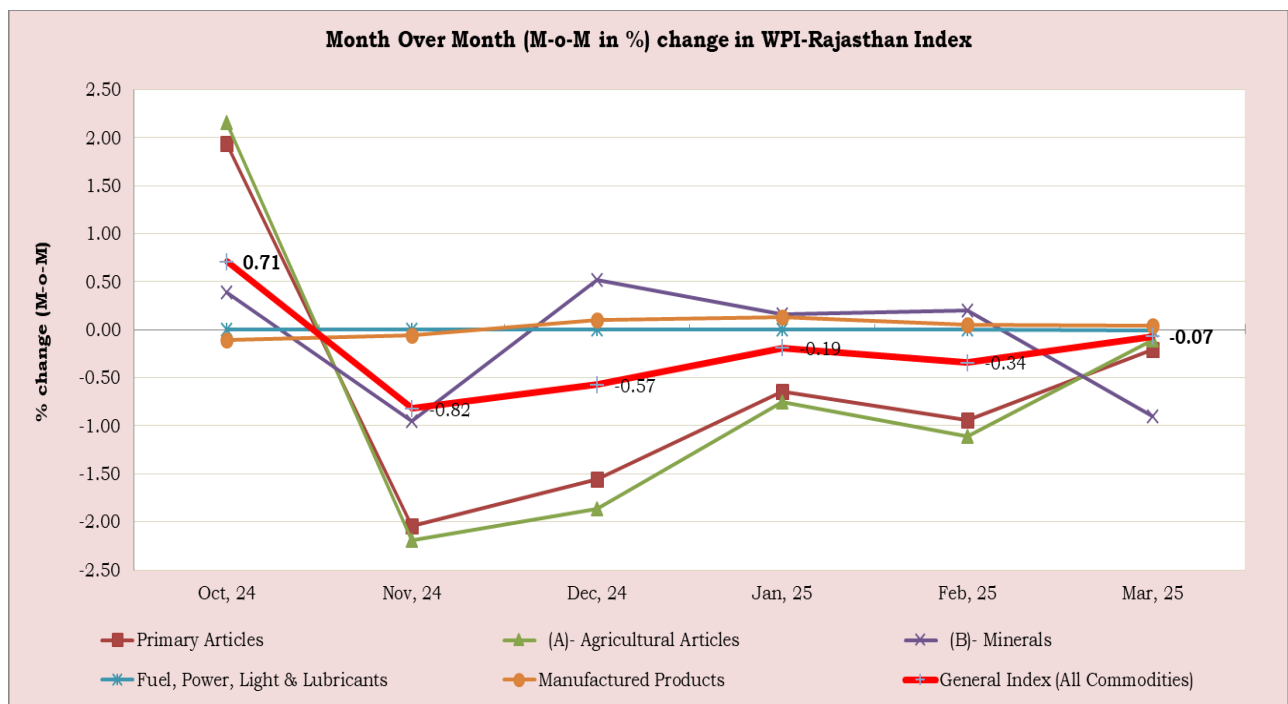
The month wise trends are reflected in the diagram given below:



Month over Month Change of WPI-RAJASTHAN:

The General Wholesale Price Index for Rajasthan stood at 396.66 (Final) for MARCH, 2025 as against 396.93 for FEBRUARY, 2025. It is showing an decrease by (-)0.07 percent as compared to the previous month. This is mainly due to showing an decrease in the index of Primary Articles groups by (-)0.21 percent and the index of Fuel, Power, Light & Lubricants groups by (-)0.01 percent while the index of Manufactured Products increase by 0.04 percent during the month under review March, 2025 over the previous month. Month-on-month changes in the General Index (WPI-Rajasthan) have been showing a consistent up-down trend for the last few months. The monthly (Month over month) change in WPI-RAJASTHAN index for last six-month is summarized below table & Diagram:

Wholesale Price Index (by Major Commodity Group) of Rajasthan Month Over Month (M-o-M in %) change in WPI-RAJASTHAN								
(Base year 1999-2000=100)								
S. No.	Major Group/ Subgroup	Weight	(M-o-M in %) change in WPI Index					
			Oct, 24	Nov, 24	Dec, 24	Jan, 25	Feb, 25	Mar, 25
1	2	3	5	6	7	8	9	9
1	Primary Articles	33.894	1.94	-2.04	-1.56	-0.64	-0.94	-0.21
	(A)- Agricultural Articles	29.933	2.16	-2.19	-1.86	-0.75	-1.11	-0.11
	(B)- Minerals	3.961	0.39	-0.95	0.52	0.16	0.20	-0.90
2	Fuel, Power, Light & Lubricants	16.253	0.00	0.00	0.00	0.00	0.00	-0.01
3	Manufactured Products	49.853	-0.11	-0.06	0.10	0.13	0.05	0.04
General Index (All Commodities)		100.00	0.71	-0.82	-0.57	-0.19	-0.34	-0.07



Month over Month Change in Major/Sub Groups of WPI: The movement of the index for the various commodity group is summarized below: (data in table no.1)

(I) Primary Articles: (weight 33.894)

The Index of Primary Articles group stood at 442.54 in MARCH, 2025 which was 443.49 in FEBRUARY, 2025 registered an decrease by (-)0.21 percent over the preceding month, which is mainly due to registered an decrease in the index of the Agricultural Articles sub-group by (-)0.11 percent and the index of Minerals sub-group by (-)0.90 percent during the month under review :

(A) Aricultural Articles: The Index of Agricultural Articles sub-group stood at 436.59 in MARCH, 2025 whereas it was 437.07 in FEBRUARY, 2025 showing a decrease of (-)0.11 percent over the previous month. This is mainly due to register a decrease in the index of Non-Food Articles sub group (-)0.88 percent while the Index of Food Articles sub group increase by 0.24 percent over the previous month. In the both sub-group the index of Fruit by 88.86 percent, Milk by 0.11 percent and Other non-food articles by 0.79 percent while Cereals decrease by (-)6.12, Pulses by (-)6.77 percent, Vegetable by (-)14.42 percent, Condiments & Spices by (-)4.00 and Fibers by (-)4.35 percent whereas the index of Egg, Meat & Fish, Other food articles and Oil-seed category remains unchanged over the previous month during the month under review. (Total 11 Sub-Groups)

(B) Minerals: The index of Minerals sub-group stood at 487.50 for the month of MARCH, 2025 which was 491.95 for the month of FEBRUARY, 2025 registered an decrease by (-)0.90 percent over the previous month. Lime Stone decrease by (-)0.25 percent, Sliver by (-)20.91 percent and Building Stone by (-)0.22 percent while Gypsum increase by 0.27 percent and Brick earth (bricks) by 0.31 percent. Five Item i.e. Lead Concentrate, Phosphorite, Steatite (Soap Stone), Zinc Concentrate and Lime Stone (Burn) remains unchanged during the month under review. (Total 10 Items)

(II) Fuel, Power, Light & Lubricants' group: (weight 16.253)

The index of Fuel, Power, Light & Lubricants group is stood at 568.08 in MARCH, 2025. which was 568.11 for the month of FEBRUARY, 2025 registered an decrease (-)0.01 percent over the previous month. This is mainly due to the index Petrol, Diesel & LP Gas group decrease by (-)0.01 percent whereas the index of Coal and Electricity remain unchanged during the month under review. (Total 03 sub-Groups)

(III) Manufactured Products Group: (weight 49.853)

The index of Manufactured Products Group was stood at 309.58 ending the month of MARCH, 2025 which was 309.46 for the month of FEBRUARY, 2025 registered an increase 0.04 percent over the previous month. This is mainly due to the index Food Products sub-group showing an decrease by (-)0.11 percent, Spinning Weaving & Finishing by (-)0.02 percent and Basic Precious & non-ferrous Metals sub-group by (-)0.01 percent while the index of Chemical sub-group increased by 0.59 percent and Non-Metallic & Mineral Products by 0.01 percent whereas the index of Five sub-group i.e. Beverage & Tobacco, Wood & Wood Products, Publishing, General Purpose Machinery and Motor Vehicles sub-group remains unchanged during the month under review. (Total 10 sub-Groups).

2. Consumer Price Indices

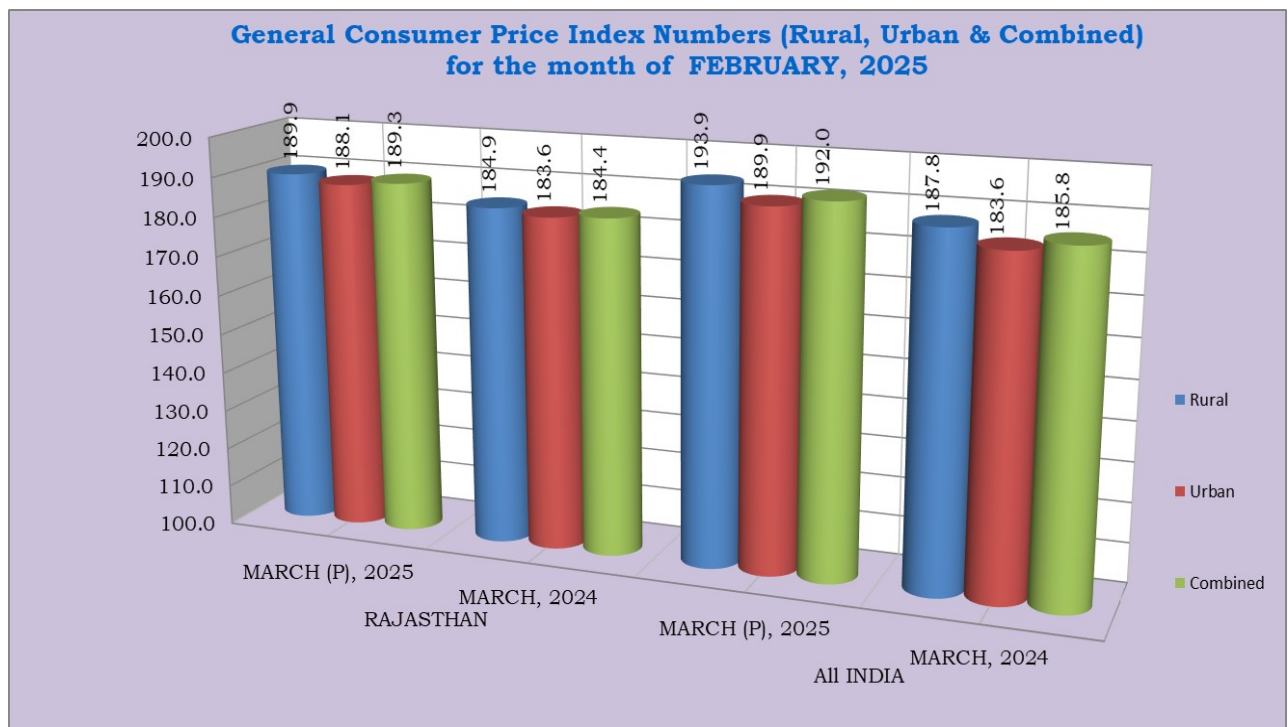
(A) General Consumer Price Index (Rural, Urban & Combined) (Base Year 2012=100)

The National Statistical Office (NSO), Ministry of Statistics & Programme Implementation, New Delhi releases General Consumer Price Indices (CPI-Rural, Urban & Combined) for all India and States/UT's separately. The General Consumer Price Index of Rajasthan for Rural, Urban and Combined sector showing year on year inflation rate of 2.70 percent, 2.45 percent and 2.66 percent respectively in the month of MARCH, 2025 over the same month of the previous year. Similarly The All India General Consumer Price Index of Rural, Urban and Combined showing inflation rate of 3.25 percent, 3.43 percent and 3.34 percent respectively in the month of MARCH, 2025 over the same month of the previous year.

Rajasthan and All India CPI-R,U&C based Inflation Rate (in %) on Point to Point (Year to Year) basis i.e. from the current month to the corresponding month of the previous year i.e. March(P), 2025 over March, 2024 are give below table :-

Consumer Price Index (Rural, Urban & Combined)							
Rajasthan & All India (Y-o-Y) inflation rate (%) based on CPI (R,U&C) for							
Month of MARCH, 2025 (Base year 2012=100)							
S. No.	Index for the Month	Rajasthan			All India		
		Rural	Urban	Combined	Rural	Urban	Combined
1	2	3	4	5	6	7	8
1	MARCH (P), 2025	189.9	188.1	189.3	193.9	189.9	192.0
2	MARCH, 2024	184.9	183.6	184.4	187.8	183.6	185.8
Percentage Variations during MARCH,(P) 2025 over MARCH, 2024		2.70	2.45	2.66	3.25	3.43	3.34

Note : P-Provisional



(B) Consumer Price Index for Industrial Workers (Base Year 2016=100)

The consumer price index for industrial workers is an important indicator of the average change in consumption levels of industrial workers in the country. The Consumer Price Index is calculating and released by Labour Bureau, Chandigarh. From the month of September 2020, 88 selected industrially developed centers' index is being released in this Series under the Consumer Price Index-IW (Base Year 2016=100), which includes Alwar, Bhilwara and Jaipur centers of Rajasthan.

At the Alwar, Bhilwara and Jaipur Center of the Rajasthan and All India, the index for the month of FEBRUARY, 2025 stood at respectively 134.5, 135.3, 127.5 and 142.8 which were 135.4, 135.8, 128.1 and 143.2 in JANUARY, 2025. The details are given in Table No-2 of this report.

The All-India CPI (IW) based inflation rate stands at 2.59 percent in February, 2025 as compared to the same month of February, 2024 in last year. At the Rajasthan Center (Alwar, Bhilwara & Jaipur) and All India CPI-IW based inflation rate (in %) year on year (i.e. current month over same month of last year, i.e. February, 2025 over February, 2024) for FEBRUARY, 2025 are given in below table :-

Consumer Price Index (Industrial Workers)					
Rajasthan Centre (Alwar, Bhilwara and Jaipur) & All India (Y-o-Y) inflation rate (%) based on CPI (IW) for					
Month of FEBRUARY, 2025 (Base Year 2016 = 100)					
S. No.	Commodity Group	ALWAR	BHILWARA	JAIPUR	ALL INDIA
1	2	3	4	5	6
1	General Index - FEBRUARY, 2025	134.5	135.3	127.5	142.8
2	General Index - FEBRUARY, 2024	127.7	131.1	125.5	139.2
Percentage Variations during February, 2025 over February, 2024		5.32	3.20	1.59	2.59

3. Retail Prices of Essential Commodities

Retail prices of 39 essential commodities are being collected on a weekly basis from 33 District Headquarters. The prices of 23 commodities have increased and 13 commodities have decreased during the month MARCH, 2025 over the previous month while PDS Item Kerosene Oil (Ration) price is not shown up due to nil allotment by the Food & Civil Supply Department during the month whereas three item Firewood and Cooking Gas (LPG) remain unchanged during the month under review.

The prices of showing an increased Maize by 0.80 percent, Moong dal (without husk) by 3.60 percent, Rapeseed oil by 0.09 percent, Vanaspati ghee by 1.00 percent, Ghee (desi) by 0.30 percent, Sugar by 1.20 percent, Milk (buff.) by 0.22 percent, Charcoal by 0.21 percent, Washing soap by 0.12 percent, Toilet Soap by 0.20 percent Cigarette by 0.11 percent and Bidi by 0.40 percent and Tea (Leaf) by 0.11 percent during the month under review over preceding month while the prices of Wheat by 1.62 percent, Barley by 1.11 percent, Gram decrease by 3.62 percent, Rice (sela) by 0.29 percent, Bajra by 0.28 percent, Jowar by 0.12 percent, Atta by 0.58 percent, Urad dal (without husk) by 0.76 percent, Arhar dal by 5.27 percent, Gram Dal by 3.62 percent, Besan by 3.45 percent, Groundnut oil by 1.12 percent, Mustard oil by 0.04 percent, Til oil by 0.51 percent, Chilli (dry) by 1.53 percent, Gur by 1.82 percent, Salt by 0.03 percent, Egg (hen-farmy) by 1.01 percent, Meat (goat) by 0.06 percent, Potato by 9.64 percent, Onion by 7.20 percent, Tomato by 12.96 percent and Okra by 1.18 percent whereas Firewood and LPG (cooking gas) has no change during the month under review over preceding month. The details are given in Table No-3 of this report. (Total 39 items) ,

Wholesale Price Index					
(Major Group / Sub-group / Commodity Group) of Rajasthan					
for the month of FEBRUARY, 2025					
(Base year 1999-2000=100)					
Major Group/ Subgroup/ Commodity	Wholesale Price Indices			Percentage Variation during FEBRUARY, 2025 over	
	MARCH(F)	FEBRUARY	MARCH	FEBRUARY	MARCH
	2025	2025	2024	2025	2024
General Index (All Commodity)	396.66	396.93	389.04	-0.07	1.96
(I) Primary Articles	442.54	443.49	423.29	-0.21	4.55
A Agricultural Articles	436.59	437.07	414.77	-0.11	5.26
1 Food Articles	451.77	450.67	427.49	0.24	5.68
i Cereals	442.74	471.61	412.57	-6.12	7.31
ii Pulses	427.59	458.62	449.18	-6.77	-4.81
iii Fruit	826.47	437.60	513.38	88.86	60.99
iv Vegetables	345.90	404.16	381.72	-14.42	-9.38
v Milk	420.60	420.15	406.97	0.11	3.35
vi Eggs, Meat & Fish	602.33	602.33	505.77	0.00	19.09
vii Condiments & Spices	444.45	462.97	506.14	-4.00	-12.19
viii Other Food Articles	312.24	312.24	308.27	0.00	1.29
2 Non-Food Articles	406.63	410.23	389.66	-0.88	4.36
i Fibers	396.69	414.72	392.64	-4.35	1.03
ii Oil-Seed	426.81	426.81	388.11	0.00	9.97
iii Other non-food	338.63	335.97	392.98	0.79	-13.83
B Minerals	487.50	491.95	487.69	-0.90	-0.04
1 Gypsum	1492.31	1488.31	1441.43	0.27	3.53
2 Lead concentrate	606.29	606.29	606.29	0.00	0.00
3 Lime Stone	329.97	330.80	354.01	-0.25	-6.79
4 Phosphorite	375.84	375.84	375.84	0.00	0.00
5 Silver	968.26	1224.30	926.90	-20.91	4.46
6 Steatite (Soap Stone)	460.89	460.89	458.82	0.00	0.45
7 Zinc Concentrate	415.09	415.09	415.09	0.00	0.00
8 Building Stone	525.10	526.27	528.87	-0.22	-0.71
9 Lime Stone (Burn)	430.14	430.14	462.42	0.00	-6.98
10 Brick earth (Bricks)	372.23	371.09	348.76	0.31	6.73
(II) Fuel, Power, Light & lubricants:	568.08	568.11	573.14	-0.01	-0.88
1 Coal	399.54	399.54	399.54	0.00	0.00
2 Petrol, Diesel & LP Gas	607.23	607.29	616.29	-0.01	-1.47
3 Electricity	538.94	538.94	538.94	0.00	0.00
(III) Manufactured products:	309.58	309.46	305.74	0.04	1.26
1 Food Products	390.21	390.64	374.38	-0.11	4.23
2 Beverage & Tobacco	439.37	439.37	435.84	0.00	0.81
3 Spinning Weaving & Finishing	260.90	260.94	264.51	-0.02	-1.36
4 Wood & Wood products	448.45	448.45	360.45	0.00	24.41
5 Publishing	586.67	586.67	586.67	0.00	0.00
6 Chemical	222.14	220.83	227.13	0.59	-2.20
7 Non-Metalic & Mineral Products	285.36	285.32	283.67	0.01	0.60
8 Basic Precious & non-Ferrous Metals	460.02	460.07	457.32	-0.01	0.59
9 General Purpose Machinery	212.70	212.70	212.36	0.00	0.16
10 Motor Vehicles	250.33	250.33	250.33	0.00	0.00

Consumer Price Index for Industrial Workers of Alwar, Bhilwara, Jaipur and All India Centres (Base Year 2016 = 100)									
Commodity Group			Food & Beverages	Pan,Supari, Tobacco and Intoxicants	Clothing & Footwear	Housing	Fuel & Light	Miscellaneous	General Index
ALWAR	JANUARY	2025	144.2	155.4	138.3	115.9	108.3	141.9	135.4
	FEBRUARY	2025	141.2	150.9	144.5	115.9	108.1	142.3	134.5
Percentage variation during February,25 over January,25			-2.08	-2.90	4.48	0.00	-0.18	0.28	-0.66
BHILWARA	JANUARY	2025	140.6	134.7	150.2	122.1	87.8	142.2	135.8
	FEBRUARY	2025	139.3	134.7	150.2	122.1	87.8	142.2	135.3
Percentage variation during February,25 over January,25			-0.92	0.00	0.00	0.00	0.00	0.00	-0.37
JAIPUR	JANUARY	2025	146.8	115.9	139.9	124.9	66.5	123.7	128.1
	FEBRUARY	2025	144.8	115.9	139.9	124.9	66.5	123.7	127.5
Percentage variation during February,25 over January,25			-1.36	0.00	0.00	0.00	0.00	0.00	-0.47
ALL INDIA	JANUARY	2025	148.3	163.5	147.2	134.6	148.6	138.6	143.2
	FEBRUARY	2025	146.8	163.7	148.4	134.6	148.5	139.0	142.8
Percentage variation during February,25 over January,25			-1.01	0.12	0.82	0.00	-0.07	0.29	-0.28

**Retail Prices of Essential Commodities in Rajasthan on the basis of
Weekly Prices collected from District Headquarters**

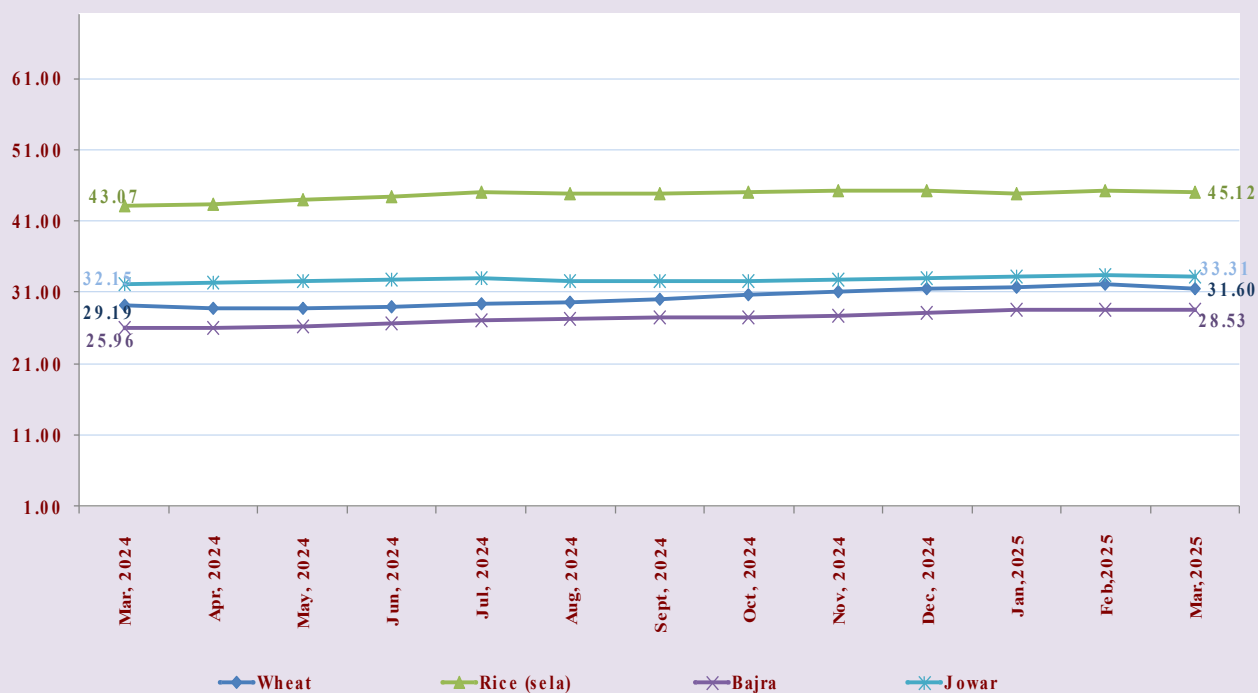
Month : MARCH, 2025

S. No	Commodities	Unit	Monthly Average Prices (Prices in Rupees for given unit's)			Percentage variation during MARCH, 2025 over	
			MARCH	FEBRUARY	MARCH	FEBRUARY	MARCH
			2025	2025	2024	2025	2024
1	2	3	4	4	6	7	8
1	Wheat	KG	31.60	32.12	29.19	-1.62	8.26
2	Barley	KG	29.28	29.61	28.70	-1.11	2.02
3.	Gram	KG	76.92	79.81	67.95	-3.62	13.20
4.	Rice (Sela)	KG	45.12	45.25	43.07	-0.29	4.76
5.	Bajra	KG	28.53	28.61	25.96	-0.28	9.90
6.	Jowar	KG	33.31	33.35	32.15	-0.12	3.61
7.	Maize	KG	31.64	31.39	29.83	0.80	6.07
8	Atta	KG	36.25	36.46	33.35	-0.58	8.70
9	Moong dal (Without hu	KG	115.26	116.08	117.69	-0.71	-2.06
10	Urad dal (Without hus	KG	129.03	130.02	127.86	-0.76	0.92
11	Arhar dal	KG	143.39	151.36	149.42	-5.27	-4.04
12	Gram dal	KG	86.17	89.41	77.81	-3.62	10.74
13	Besan	KG	93.92	97.28	84.44	-3.45	11.23
14	Groundnut Oil	KG	186.92	189.03	189.87	-1.12	-1.55
15	Mustard Oil	KG	155.73	155.80	133.36	-0.04	16.77
16	Til Oil	KG	273.99	275.40	278.89	-0.51	-1.76
17	Rapeseed Oil	KG	132.93	132.81	122.19	0.09	8.79
18	Vanaspati Ghee (p.Ltr.	LTR.	138.64	137.27	123.51	1.00	12.25
19	Ghee (deshi)	KG	805.35	802.95	755.50	0.30	6.60
20	Chilies dry (Whole)	KG	251.70	255.60	285.66	-1.53	-11.89
21	Gur	KG	50.05	55.98	47.91	-10.59	4.47
22	Sugar	KG	43.96	43.44	42.65	1.20	3.07
23	Salt	KG	29.53	29.54	27.61	-0.03	6.95
24	Milk (Buff.) (p.Ltr.)	LTR.	62.81	62.17	61.65	1.03	1.88
25	Egg (Hen) Each	EACH	6.88	6.95	6.81	-1.01	1.03
26	Goat Meat	KG	600.61	600.95	583.21	-0.06	2.98
27	Potato	KG	22.86	25.30	21.19	-9.64	7.88
28	Onion	KG	32.73	35.27	31.24	-7.20	4.77
29	Tomato	KG	25.26	29.02	37.73	-12.96	-33.05
30	Okra	KG	73.67	74.55	68.17	-1.18	8.07
31	Charcoal	5 KG	157.71	157.38	155.20	0.21	1.62
32	Firewood	5 KG	47.08	47.08	45.36	0.00	3.79
33	Kerosene Oil (p.Ltr.)	LTR.	NA	NA	NA	NA	NA
34	Washing Soap (Wheel Green 250	PER CAKE	16.20	16.18	16.56	0.12	-2.17
35	Toilet Soap (p. Cake) (Lux 100 gms.)	PER CAKE	29.50	29.44	29.62	0.20	-0.41
36	Cigarette (10 in 1 pack)	PER PKT.	80.42	80.33	79.22	0.11	1.51
37	Bidi (Per Bundle)	25 BIDI	25.29	25.19	24.09	0.40	4.98
38	Tea Leaf (per packet)	245 GRAM	128.10	127.96	128.25	0.11	-0.12
39	Cooking Gas (L.P.G.) 14.2 Kg. Refill	PER CYLINDER	822.86	822.86	863.06	0.00	-4.66

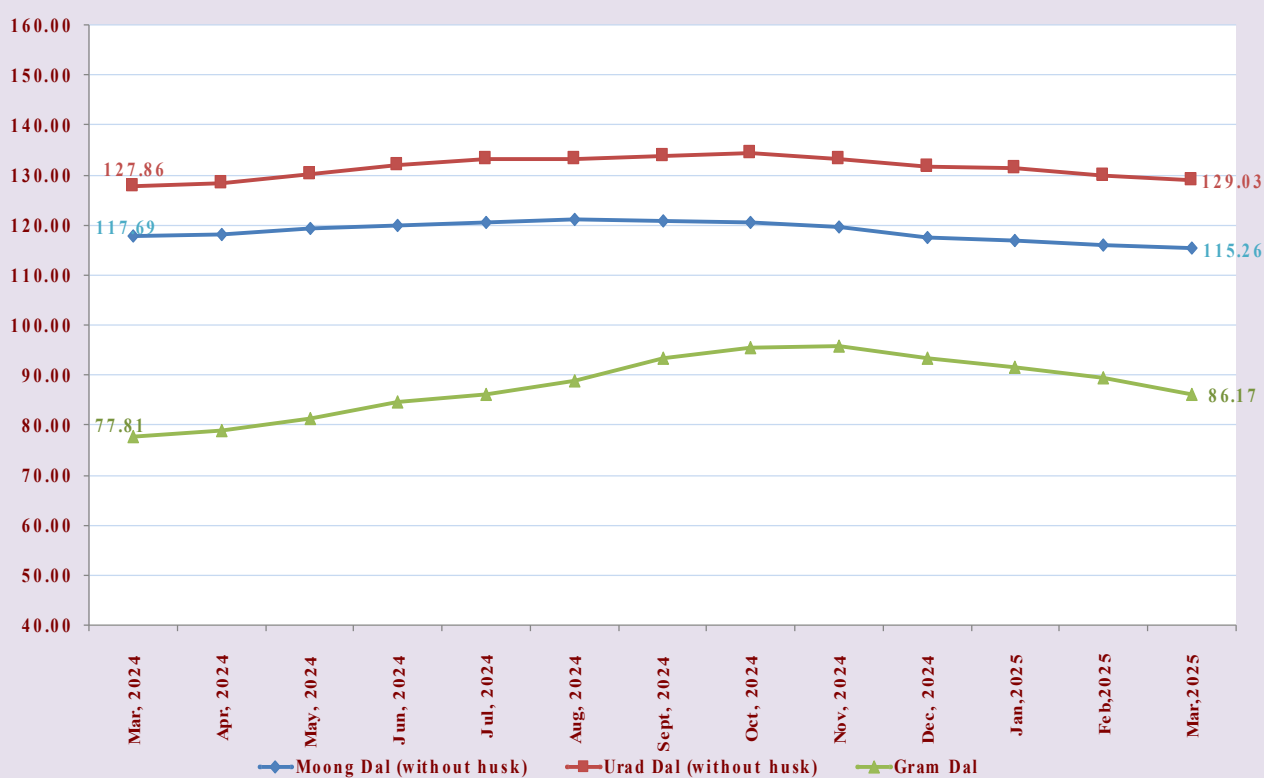
TRENDS IN RETAIL PRICES OF ESSENTIAL COMMODITIES (Monthly Average Prices)

MARCH, 2024 to MARCH,2025

TRENDS IN RETAIL PRICES OF CEREALS



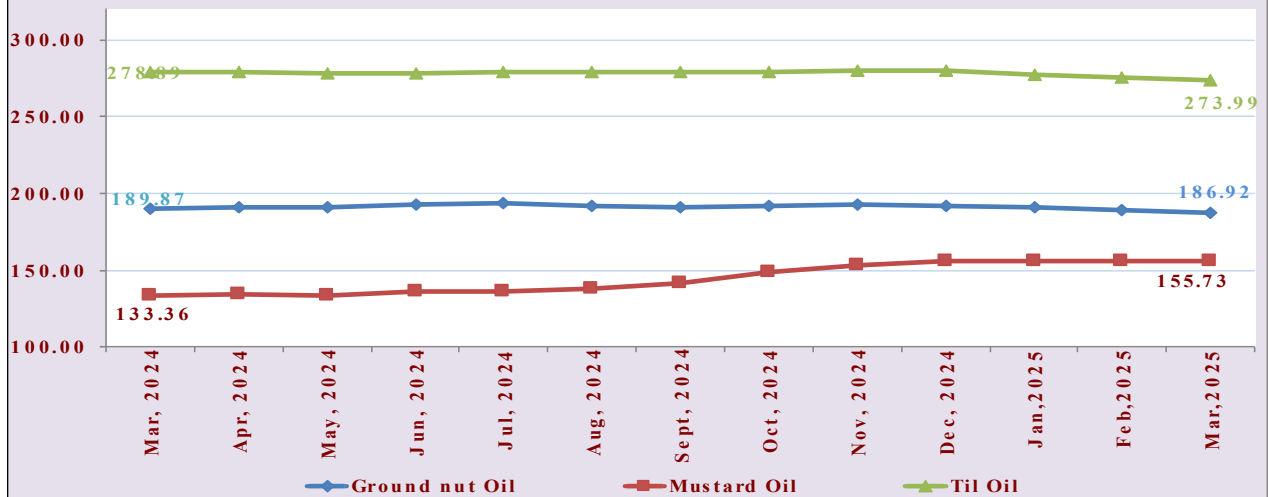
TRENDS IN RETAIL PRICES OF PULSES



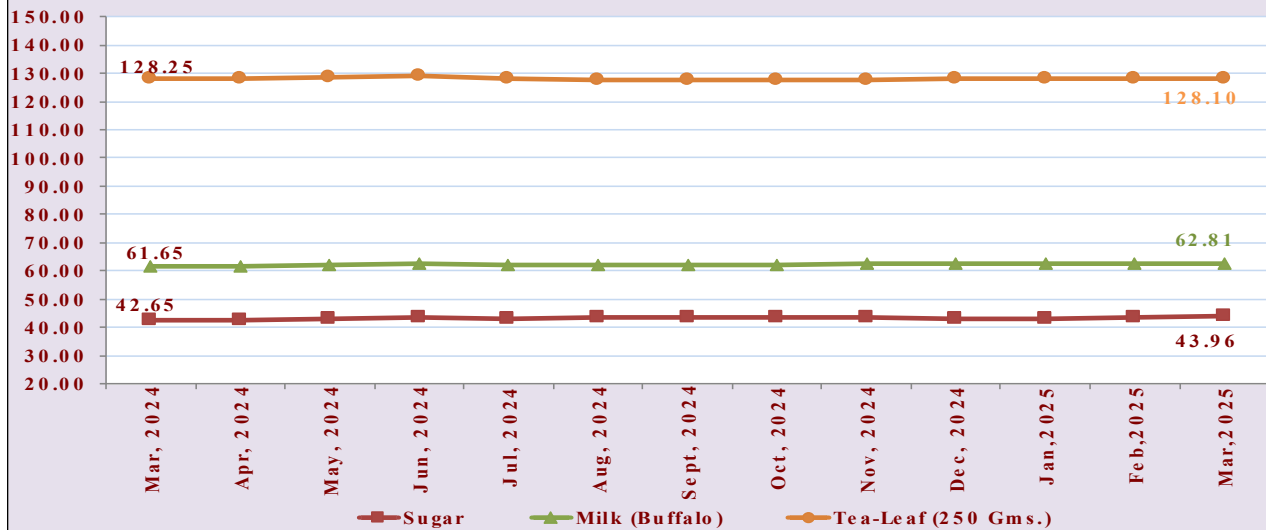
TRENDS IN RETAIL PRICES OF ESSENTIAL COMMODITIES (Monthly Average Prices)

MARCH, 2024 to MARCH, 2025

TRENDS IN RETAIL PRICES OF OIL



TRENDS IN RETAIL PRICES OF MISC. ITEMS



TRENDS IN RETAIL PRICES ONION & POTATO

