



**Government of Rajasthan**

**MONTHLY BULLETIN  
OF  
PRICES  
IN  
RAJASTHAN**

**NOVEMBER, 2023**

**Directorate of Economics and Statistics,  
Statistics Department, Rajasthan**

**Yojana Bhawan, Tilak Marg, C-Scheme, Jaipur (302005)**

## MONTHLY BULLETIN OF PRICE INDICES & It's TREND IN RAJASTHAN For the Month of NOVEMBER, 2023

Under the Monthly Price Review for the month of NOVEMBER, 2023 the State Wholesale Price Index (Base 1999-2000=100) and Monthly Retail Price Review of 39 Essential Commodities in Rajasthan released by the Department in the review of the month as well as The Rajasthan State and All India Consumer Price Index (Rural, Urban and Combined) released by the NSO, Ministry of Statistics & Programme Implementation, New Delhi and Consumer Price Index (Industrial Workers) released by Labour Bureau, Shimla has been included.

**1. INDEX NUMBER OF WHOLESALE PRICE (WPI) IN RAJASTHAN (B.Y. 1999-2000=100) THE ANNUAL RATE OF INFLATION (Year on Year %):** The General Index of Wholesale Price in Rajasthan stood at 391.38 (Final) end of NOVEMBER, 2023 which was 390.44 in NOVEMBER, 2022. The annual rate of inflation on the above basis stood at 0.24 percent for the month of NOVEMBER, 2023 (over November, 2022) against 0.86 percent recorded in October, 2023. The inflation rate for the month of November, 2023 has registered a slight decline as compared to the month of October, 2023. It's mainly due to decrease in the prices of primary articles group by (-) 0.08 percent and Manufactured Product by 0.26 percent. This rate has been 0.96 percent in August, 2023, 0.92 percent in September, 2023, 0.86 percent in October, 2023 and 0.24 percent in November, 2023 as compared to the corresponding months of the previous year respectively in the last four months. The annual change in the components of WPI index and inflation in the last three months is given below table of this report.

**Wholesale Price Index (by Major Commodity Group) of Rajasthan  
for the month of NOVEMBER, 2023**

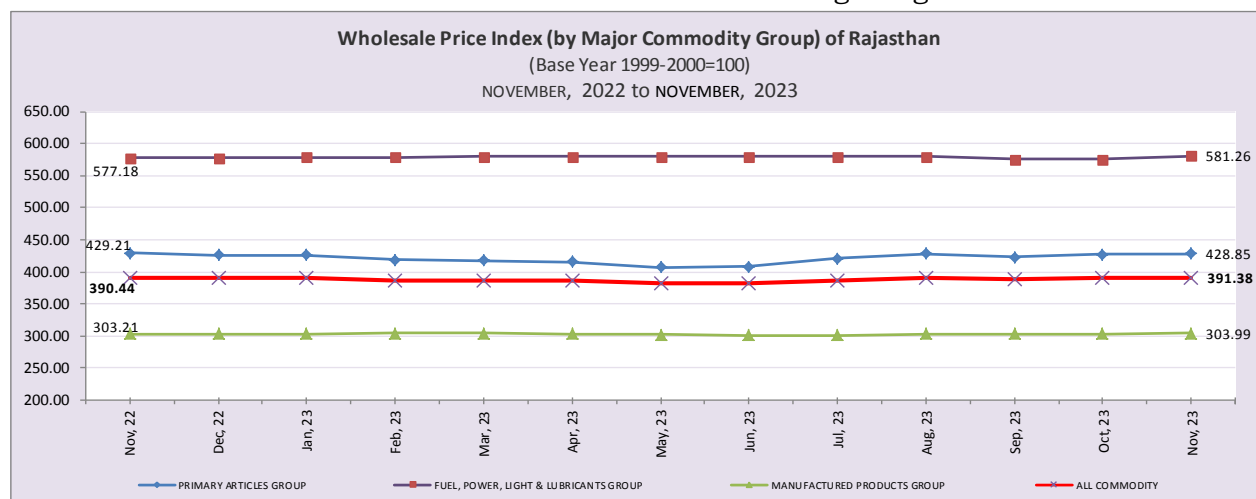
(Base year 1999-2000=100)

**Index Numbers & Annual Rate of Inflation (Y-o-Y in %)**

S. No.	Major Group/Subgroup	Weight	SEPTEMBER, 2023		OCTOBER, 2023		NOVEMBER, 2023(F)	
			Index	Inflation	Index	Inflation	Index	Inflation
1	2	3	4	5	6	7	8	9
1	Primary Articles	33.894	422.57	1.87	427.75	1.73	428.85	-0.08
	(A)- Agricultural Articles	29.933	415.54	1.02	421.12	0.82	421.76	-1.32
	(B)- Minerals	3.961	475.68	7.83	477.77	8.26	482.41	8.97
2	Fuel, Power, Light & Lubricants	16.253	575.63	-0.14	575.69	-0.13	581.26	0.71
3	Manufactured Products	49.853	303.25	0.69	303.57	0.64	303.99	0.26
<b>General Index (All Commodities)</b>		<b>100.00</b>	<b>387.96</b>	<b>0.92</b>	<b>389.89</b>	<b>0.86</b>	<b>391.38</b>	<b>0.24</b>

Note : F- Final Index

The month wise trends are reflected in the diagram given below:



## Month over Month Change of WPI-RAJASTHAN:

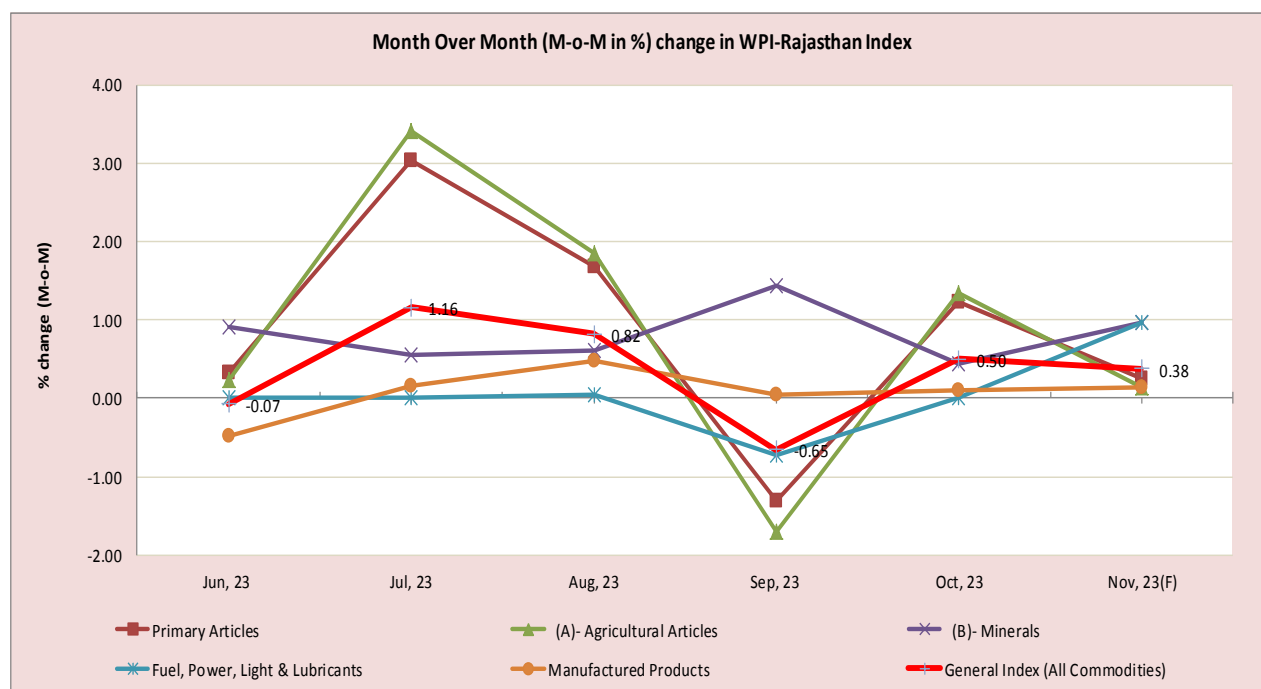
The General Wholesale Price Index for Rajasthan stood at 391.38 (Final) for NOVEMBER, 2023 as against 389.89 for OCTOBER, 2023. It is showing an increase of 0.38 percent as compared to the previous month. This is mainly due to showing an increased in the index of Primary Articles groups by 0.26 percent, Fuel, Power, Light & Lubricants group by 0.97 percent and Manufactured Products group by 0.14 percent during November, 2023 month over the previous month. The month-on-month change in General Index (WPI-Rajasthan) is showing an up-down trend since last few months. It showed a declining trend during August-September, 2023 Months but again moved upwards in October, 2023 and again continued to decline during the months of November, 2023 over the previous month. The monthly (Month over month) change in WPI-RAJASTHAN index for last six-month is summarized below table & Diagram:

### Month Over Month (M-o-M in %) change in WPI-RAJASTHAN

(Base year 1999-2000=100)

S. No.	Major Group/Subgroup	Weight	(M-o-M in %) change in WPI Index #					
			Jun, 23	Jul, 23	Aug, 23	Sep, 23	Oct, 23	Nov, 23(F)
1	2	3	4	5	6	7	8	9
1	Primary Articles	33.894	0.33	3.03	1.69	-1.31	1.23	0.26
	(A)- Agricultural Articles	29.933	0.24	3.41	1.85	-1.71	1.34	0.15
	(B)- Minerals	3.961	0.92	0.56	0.61	1.43	0.44	0.97
2	Fuel, Power, Light & Lubricants	16.253	0.00	0.00	0.04	-0.73	0.01	0.97
3	Manufactured Products	49.853	-0.48	0.16	0.48	0.04	0.11	0.14
<b>General Index (All Commodities)</b>		<b>100.00</b>	<b>-0.07</b>	<b>1.16</b>	<b>0.82</b>	<b>-0.65</b>	<b>0.50</b>	<b>0.38</b>

Note: F: Final Index, # Monthly rate of change, based on month over month (M-o-M) WPI calculated over the preceding month



**Month over Month Change in Major/Sub Groups of WPI:** The movement of the index for the various commodity group is summarized below: (data in table no.1)

**(I) Primary Articles: (weight 33.894)**

The Index of Primary Articles group stood at 428.85 in NOVEMBER, 2023 which was 427.75 in OCTOBER, 2023 registered an increase by 0.26 percent over the preceding month, which is mainly due to showing an increase in the index of the Agricultural Articles sub-group by 0.15 percent and Minerals sub-group by 0.97 percent during the month under review.

**(A) Agricultural Articles:** The Index of Agricultural Articles sub-group stood at 421.76 in NOVEMBER, 2023 whereas it was 421.12 in OCTOBER, 2023 showing an increase of 0.15 percent over the previous month. This is mainly due to register an increase in the Index of Non-Food Articles sub group by 0.76 percent while the index of Food Articles sub group showing a decreased by 0.15 percent over the previous month. In the both sub-group the index of Cereals category register an increase by 0.67 percent, Vegetables by 11.55 percent, Egg, Meat & Fish by 2.08 percent, Oil-seed by 1.22 percent and Other non-food articles by 2.89 percent while the index of Pulses category showing a decreased by 0.65 percent, Fruit by 5.85 percent, Milk by 1.15 percent, Condiments & Spices by 1.73 percent and Fibers by 2.79 percent whereas the index of one Item i.e. Other food articles category remains unchanged during the month under review. (Total 11 Sub-Groups)

**(B) Minerals:** The index of Minerals sub-group stood at 482.41 for the month of NOVEMBER, 2023 which was 477.77 for the month of OCTOBER, 2023 registered an increase of 0.97 percent over the previous month. In the Mineral sub-group this is mainly due to showing an increase in the index of Silver by 2.00 percent, Steatite (soap stone) by 0.10 percent, Building Stone by 2.75 percent and Lime Stone(Burn) by 0.59 percent while the index of Lime Stone register a decreased by 3.02 percent whereas the index of Five Item i.e. Gypsum, Lead Concentrate, Phosphorite, Zinc Concentrate and Brick earth (Bricks) remains unchanged during the month under review. (Total 10 Items)

**(II) Fuel, Power, Light & Lubricants' group: (weight 16.253)**

The index of 'Fuel, Power, Light and Lubricants' Group is stood at 581.26 for the month of NOVEMBER, 2023 which was 575.69 for the month of OCTOBER, 2023 registered an increase by 0.97 percent over the previous month. In this group the index of Coal sub group register an increase by 0.27 percent and Petrol, Diesel & LPG Gas Sub-group by 1.59 percent whereas the index of One Item index i.e. Electricity sub group unchanged during the month under review. (Total 03 sub-Groups)

**(III) Manufactured Products Group: (weight 49.853)**

The index of Manufactured Products Group was stood at 303.57 ending the month of OCTOBER, 2023 which is showing an increase of 0.14 percent during the month of NOVEMBER, 2023 over the previous month and it's reached at 303.99. In the Manufactured Products Major group the index of Beverage & Tobacco sub-group register an increase by 0.54 percent, Spinning, Weaving & Finishing sub group by 0.06 percent, Chemical by 0.60 percent, Non-Metallic & Mineral Products by 0.24 percent and Basic Precious & non-ferrous Metals by 0.02 percent while the index of Food Products sub-group showing a decreased by 0.05 percent and General Purpose Machinery by 0.17 percent whereas the index of Three sub-group i.e. Wood & Wood Products, Publishing sub-group and Motor Vehicles sub-group remains unchanged during the month under review. (Total 10 sub-Groups).

## 2. Consumer Price Indices

### (i) General Consumer Price Index (Rural, Urban & Combined) (Base Year 2012=100)

The National Statistical Office (NSO), Ministry of Statistics & Programme Implementation releases General Consumer Price Indices (CPI-Rural, Urban & Combined) for all India and States/UT's separately. The General Consumer Price Index of **Rajasthan** for Rural, Urban and Combined sector showing year on year inflation rate (in %) of 6.85 percent, 7.23 percent and 6.99 percent respectively in the month of NOVEMBER, 2023 over the same month of previous year. Similarly The **All India** General Consumer Price Index of Rural, Urban and Combined sector showing inflation rate (in %) of 5.85 percent, 5.26 percent and 5.55 percent respectively in the month of NOVEMBER, 2023 over the same month of the previous year.

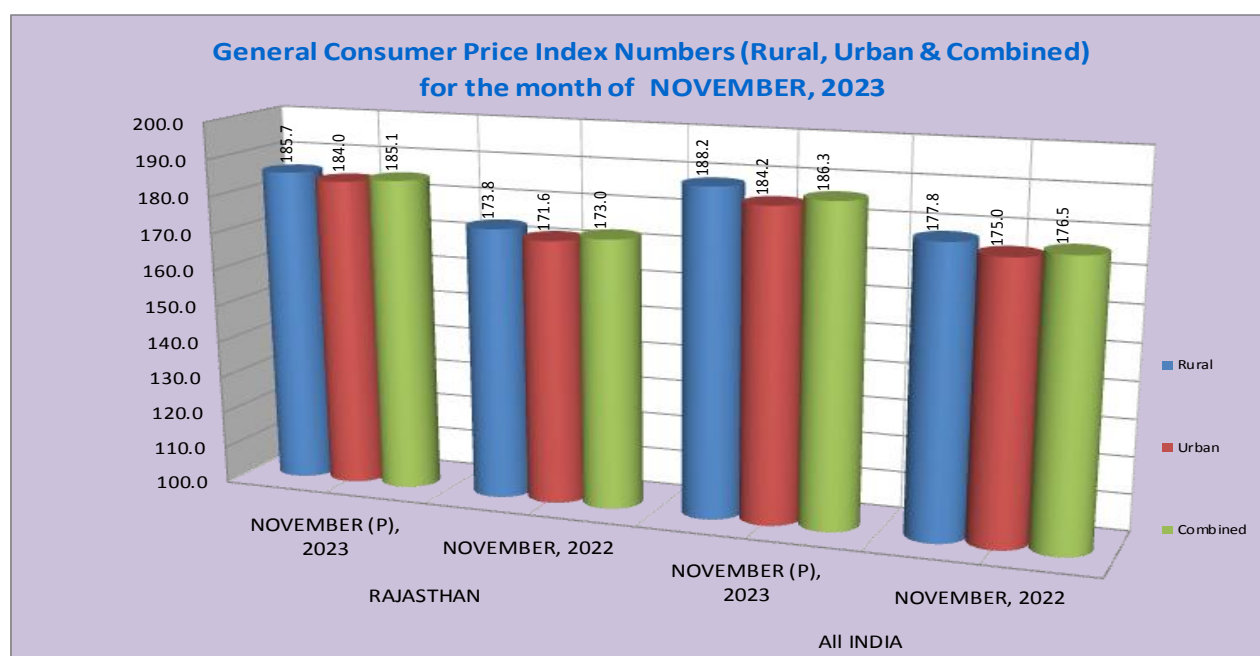
Rajasthan and All India CPI-R,U&C based Inflation Rate (%) on Point to Point (Year to Year) basis i.e. from the current month to the corresponding month of the previous year i.e. November (P), 2023 over November, 2022 in the table below According to :-

#### Consumer Price Index (Rural, Urban & Combined)

Rajasthan & All India (Y-o-Y) inflation rate (%) based on CPI (R,U&C) for Month of NOVEMBER, 2023 (Base year 2012=100)

S. No.	Index for the Month	Rajasthan			All India		
		Rural	Urban	Combined	Rural	Urban	Combined
1	2	3	4	5	6	7	8
<b>1</b>	<b>NOVEMBER (P), 2023</b>	<b>185.7</b>	<b>184.0</b>	<b>185.1</b>	<b>188.2</b>	<b>184.2</b>	<b>186.3</b>
<b>2</b>	<b>NOVEMBER, 2022</b>	<b>173.8</b>	<b>171.6</b>	<b>173.0</b>	<b>177.8</b>	<b>175.0</b>	<b>176.5</b>
	<b>Percentage Variations during Nov.(P), 2023 over Nov., 2022</b>	<b>6.85</b>	<b>7.23</b>	<b>6.99</b>	<b>5.85</b>	<b>5.26</b>	<b>5.55</b>

Note : P-Provisional



## **(ii) Consumer Price Index for Industrial Workers (Base Year 2016=100)**

The consumer price index for industrial workers is an important indicator of the average change in consumption levels of industrial workers in the country. The Consumer Price Index is calculating and released by Labor Bureau, Shimla. From the month of September 2020, 88 selected industrially developed centers' index is being released in this Series under the Consumer Price Index-IW (Base Year 2016=100), which includes Alwar, Bhilwara and Jaipur centers of Rajasthan.

At the Alwar, Bhilwara and Jaipur Center of the Rajasthan showing a year on year inflation rate (in %) of (-)0.31 percent, 1.08 percent and (-)1.50 percent respectively in the month of November, 2023 over the same month of previous year. Similarly All India General Consumer Price showing inflation rate (in %) of 4.98 percent respectively in the month of November, 2023 over the same month of the previous year.

At the Rajasthan Center (Alwar, Bhilwara & Jaipur) and All India CPI-IW based inflation rate (in %) year on year (i.e. current month over same month of last year, i.e. November, 2023 over November, 2022) for NOVEMBER, 2023 are given in below table :-

<b>Consumer Price Index (Industrial Workers)</b>					
<b>Rajasthan Centre (Alwar, Bhilwara and Jaipur) &amp; All India (Y-o-Y) inflation rate (%) based on CPI (IW) for</b>					
<b>Month of NOVEMBER, 2023</b>					
<b>( Base Year 2016 = 100 )</b>					
<b>S. No.</b>	<b>Commodity Group</b>	<b>ALWAR</b>	<b>BHILWARA</b>	<b>JAIPUR</b>	<b>ALL INDIA</b>
<b>1</b>	<b>2</b>	<b>3</b>	<b>4</b>	<b>5</b>	<b>6</b>
<b>1</b>	<b>General Index - NOVEMBER, 2023</b>	<b>127.4</b>	<b>131.2</b>	<b>124.4</b>	<b>139.1</b>
<b>2</b>	<b>General Index - NOVEMBER, 2022</b>	<b>127.8</b>	<b>129.8</b>	<b>126.3</b>	<b>132.5</b>
	<b>Percentage Variations during Nov., 2023 over Nov., 2022</b>	<b>-0.31</b>	<b>1.08</b>	<b>-1.50</b>	<b>4.98</b>

## **3. Retail Prices of Essential Commodities**

Retail prices of 39 essential commodities are being collected on a weekly basis from 33 District Headquarters. The prices of 26 commodities have increased whereas 05 commodities have decreased during the month NOVEMBER, 2023 over the previous month. while the prices of Seven Commodity :- Salt, Charcoal, Firewood, Toilet soap, Biri(per bundle), Tea Leaf (per 245g packet) and Cooking Gas (LPG14.2 kg.) Unchanged whereas PDS Item Kerosene Oil (Ration) price not shown up due to Nil allotment by Food & Civil Supply Department during the month under review. The prices of Wheat showing an increased by 1.40 percent, Barley by 0.62 percent, Gram by 0.89 percent, Rice (sela) by 0.28 percent, Atta by 1.29 percent, Moong Dal (without husk) 0.90 percent, Urad dal (without husk) by 2.70 percent, Arhar Dal by 1.30 percent, Gram Dal by 0.76 percent, Besan by 0.57 percent, Mustard oil by 0.09 percent, Til oil by 0.71 percent, Rapeseed oil by 0.31 percent, Ghee (Desi) by 0.30 percent, Chilies(dry-whole) by 0.70 percent, Gur by 0.06 percent, Sugar by 1.48 percent, Milk (Buff.) by 0.30 percent, Egg (Hen) by 1.33 percent, Meat (Goat) by 0.80 percent, Potato by 2.84 percent, Onion by 49.02 percent, Tomato by 25.17 percent, Okra by 7.70 percent, Washing soap by 0.25 percent and Cigarette by 0.56 percent during the month under review over preceding month while the prices of Bajra decreased by 0.43 percent, Jowar by 0.06 percent, Maize by 0.51 percent, Groundnut oil by 0.46 percent and Vanaspati ghee by 0.43 percent during the month under review over preceding month. The details are given in Table No-2 of this report. (Total 39 items)



**Wholesale Price Index ( Major Group / Sub-group / Commodity Group ) of Rajasthan**  
for the month of **NOVEMBER, 2023**

(Base year 1999-2000=100)

Major Group/Subgroup/ Commodity		Wholesale Price Indices			Percentage Variation during NOVEMBER, 2023 over	
		NOVEMBER (F)	OCTOBER	NOVEMBER	OCTOBER	NOVEMBER
		2023	2023	2022	2023	2022
<b>General Index (All Commodity)</b>		<b>391.38</b>	<b>389.89</b>	<b>390.44</b>	<b>0.38</b>	<b>0.24</b>
<b>(I) Primary Articles</b>		<b>428.85</b>	<b>427.75</b>	<b>429.21</b>	<b>0.26</b>	<b>-0.08</b>
<b>A</b>	<b>Agricultural Articles</b>	<b>421.76</b>	<b>421.12</b>	<b>427.42</b>	<b>0.15</b>	<b>-1.32</b>
<b>A-1</b>	<b>Food Articles</b>	<b>423.72</b>	<b>424.37</b>	<b>404.63</b>	<b>-0.15</b>	<b>4.72</b>
	ai Cereals	411.92	409.17	409.05	0.67	0.70
	aii Pulses	449.05	451.98	395.67	-0.65	13.49
	bi Fruit	291.54	309.66	303.12	-5.85	-3.82
	bii Vegetables	597.20	535.36	486.45	11.55	22.77
	c Milk	415.12	419.97	398.21	-1.15	4.25
	d Eggs, Meat & Fish	490.53	480.54	457.11	2.08	7.31
	e Condiments & Spices	480.87	489.35	445.47	-1.73	7.95
	f Other Food Articles	308.27	308.27	305.98	0.00	0.75
<b>A-2</b>	<b>Non-Food Articles</b>	<b>417.89</b>	<b>414.72</b>	<b>472.39</b>	<b>0.76</b>	<b>-11.54</b>
	a Fibers	409.19	420.93	515.20	-2.79	-20.58
	b Oil-Seed	423.84	418.75	490.95	1.22	-13.67
	c Other non-food	402.17	390.86	346.92	2.89	15.93
<b>B</b>	<b>Minerals</b>	<b>482.41</b>	<b>477.77</b>	<b>442.72</b>	<b>0.97</b>	<b>8.97</b>
	1 Gypsum	1410.18	1410.18	1316.43	0.00	7.12
	2 Lead concentrate	606.29	606.29	606.29	0.00	0.00
	3 Lime Stone	299.86	309.21	323.96	-3.02	-7.44
	4 Phosphorite	412.51	412.51	339.16	0.00	21.63
	5 Silver	924.85	906.70	749.48	2.00	23.40
	6 Steatite (Soap Stone)	459.02	458.56	457.05	0.10	0.43
	7 Zinc Concentrate	415.09	415.09	415.09	0.00	0.00
	8 Building Stone	528.38	514.22	453.71	2.75	16.46
	9 Lime Stone (Burn)	423.70	421.22	356.80	0.59	18.75
	10 Brick earth (Bricks)	341.82	341.82	340.30	0.00	0.45
<b>(II) Fuel, Power, Light &amp; lubricants:</b>		<b>581.26</b>	<b>575.69</b>	<b>577.18</b>	<b>0.97</b>	<b>0.71</b>
	1 Coal	399.54	398.45	372.17	0.27	7.35
	2 Petrol, Diesel & LP Gas	630.83	620.98	626.70	1.59	0.66
	3 Electricity	538.94	538.94	538.94	0.00	0.00
<b>(III) Manufactured products:</b>		<b>303.99</b>	<b>303.57</b>	<b>303.21</b>	<b>0.14</b>	<b>0.26</b>
	A Food Products	374.58	374.76	404.53	-0.05	-7.40
	B Beverage & Tobacco	432.26	429.93	400.15	0.54	8.02
	C Spinning Weaving & Finishing	262.37	262.20	259.65	0.06	1.05
	D Wood & Wood products	357.20	357.20	357.20	0.00	0.00
	E Publishing	586.67	586.67	586.67	0.00	0.00
	F Chemical	224.95	223.60	214.77	0.60	4.74
	G Non-Metalic & Mineral Products	280.54	279.86	268.68	0.24	4.41
	H Basic Precious & non-Ferrous Metals	456.16	456.08	442.22	0.02	3.15
	I General Purpose Machinery	212.21	212.57	211.38	-0.17	0.39
	J Motor Vehicles	250.32	250.32	249.99	0.00	0.13

Note : F-Final Index

**Retail Prices of Essential Commodities in Rajasthan on the basis of  
Weekly Prices collected from District Headquarters  
Month : NOVEMBER, 2023**

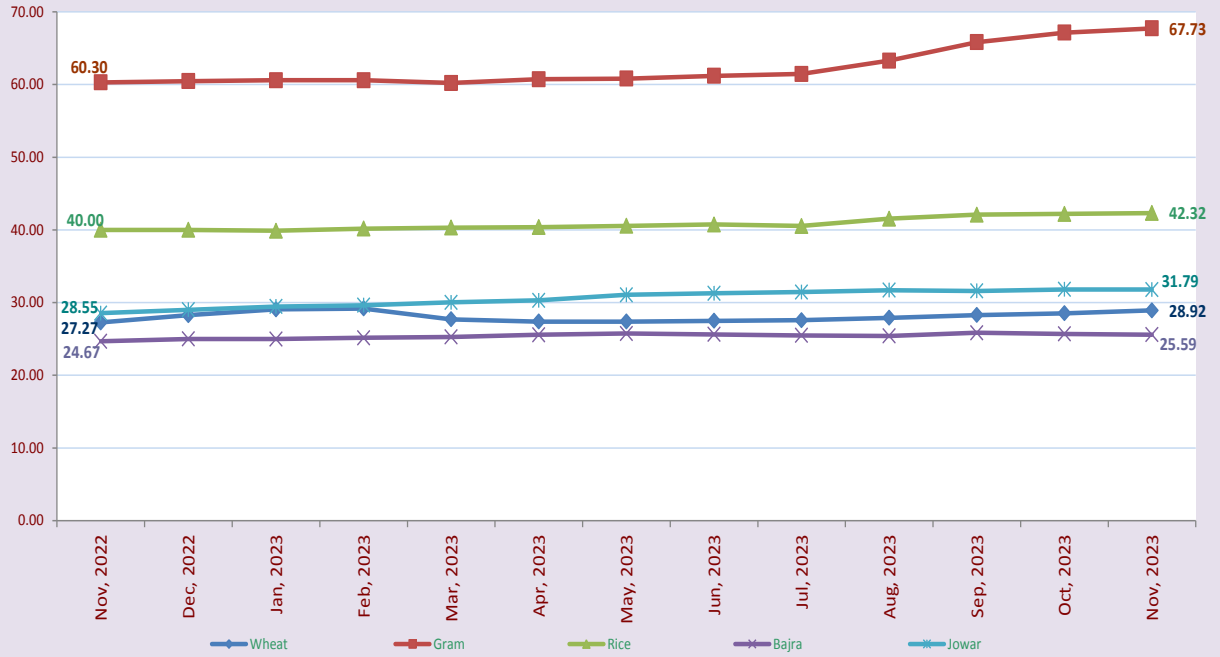
S. No	Commodities	Unit	Monthly Average Prices (Prices in Rupees for given unit's)			Percentage variation during NOVEMBER, 2023 over	
			NOVEMBER	OCTOBER	NOVEMBER	OCTOBER	NOVEMBER
			2023	2023	2022	2023	2022
1	2	3	4	5	6	7	8
1	Wheat	KG	28.92	28.52	27.27	1.40	6.05
2	Barley	KG	29.32	29.14	33.03	0.62	-11.23
3.	Gram	KG	67.73	67.13	60.30	0.89	12.32
4.	Rice (Sela)	KG	42.32	42.20	40.00	0.28	5.80
5.	Bajra	KG	25.59	25.70	24.67	-0.43	3.73
6.	Jowar	KG	31.79	31.81	28.55	-0.06	11.35
7.	Maize	KG	29.42	29.57	28.68	-0.51	2.58
8	Atta	KG	32.91	32.49	30.73	1.29	7.09
9	Moong dal (Without husk)	KG	116.69	115.65	101.86	0.90	14.56
10	Urad dal (Without husk)	KG	124.89	121.61	110.19	2.70	13.34
11	Arhar dal	KG	145.83	143.96	113.71	1.30	28.25
12	Gram dal	KG	78.62	78.03	68.17	0.76	15.33
13	Besan	KG	84.87	84.39	74.42	0.57	14.04
14	Groundnut Oil	KG	195.45	196.36	191.15	-0.46	2.25
15	Mustard Oil	KG	139.11	138.98	167.32	0.09	-16.86
16	Til Oil	KG	267.34	265.46	251.93	0.71	6.12
17	Rapeseed Oil	KG	124.81	124.43	149.55	0.31	-16.54
18	Vanaspati Ghee (p.Ltr.)	LTR.	125.16	125.70	140.27	-0.43	-10.77
19	Ghee (deshi)	KG	745.68	743.45	735.02	0.30	1.45
20	Chilies dry (Whole)	KG	298.13	296.06	269.47	0.70	10.64
21	Gur	KG	48.47	48.44	45.02	0.06	7.66
22	Sugar	KG	42.41	41.79	39.84	1.48	6.45
23	Salt	KG	27.55	27.55	27.28	0.00	0.99
24	Milk (Buff.) (p.Ltr.)	LTR.	61.15	60.97	58.02	0.30	5.39
25	Egg (Hen) Each	EACH	6.84	6.75	6.37	1.33	7.38
26	Goat Meat	KG	576.44	571.86	541.98	0.80	6.36
27	Potato	KG	22.44	21.82	26.99	2.84	-16.86
28	Onion	KG	59.13	39.68	28.72	49.02	105.88
29	Tomato	KG	38.49	30.75	39.76	25.17	-3.19
30	Okra	KG	51.88	48.17	51.05	7.70	1.63
31	Charcoal	5 KG	155.00	155.00	150.71	0.00	2.85
32	Firewood	5 KG	45.29	45.29	43.97	0.00	3.00
33	Kerosene Oil (p.Ltr.)	LTR.	N.A.	N.A.	N.A.	NA	NA
34	Washing Soap (Wheel Green 250 gms.)	PER CAKE	16.30	16.26	14.72	0.25	10.73
35	Toilet Soap (p. Cake) (Lux 100 gms.)	PER CAKE	29.12	29.12	27.42	0.00	6.20
36	Cigarette (10 in 1 packet)	PER PKT.	78.97	78.53	77.33	0.56	2.12
37	Biri (Per Bundle )	25 BIRI	24.06	24.06	23.67	0.00	1.65
38	Tea Leaf (per packet)	245 GRAM	127.76	127.76	127.33	0.00	0.34
39	Cooking Gas (L.P.G.) 14.2 Kg. Refill	PER CYLINDER	922.30	922.31	1071.65	0.00	-13.94



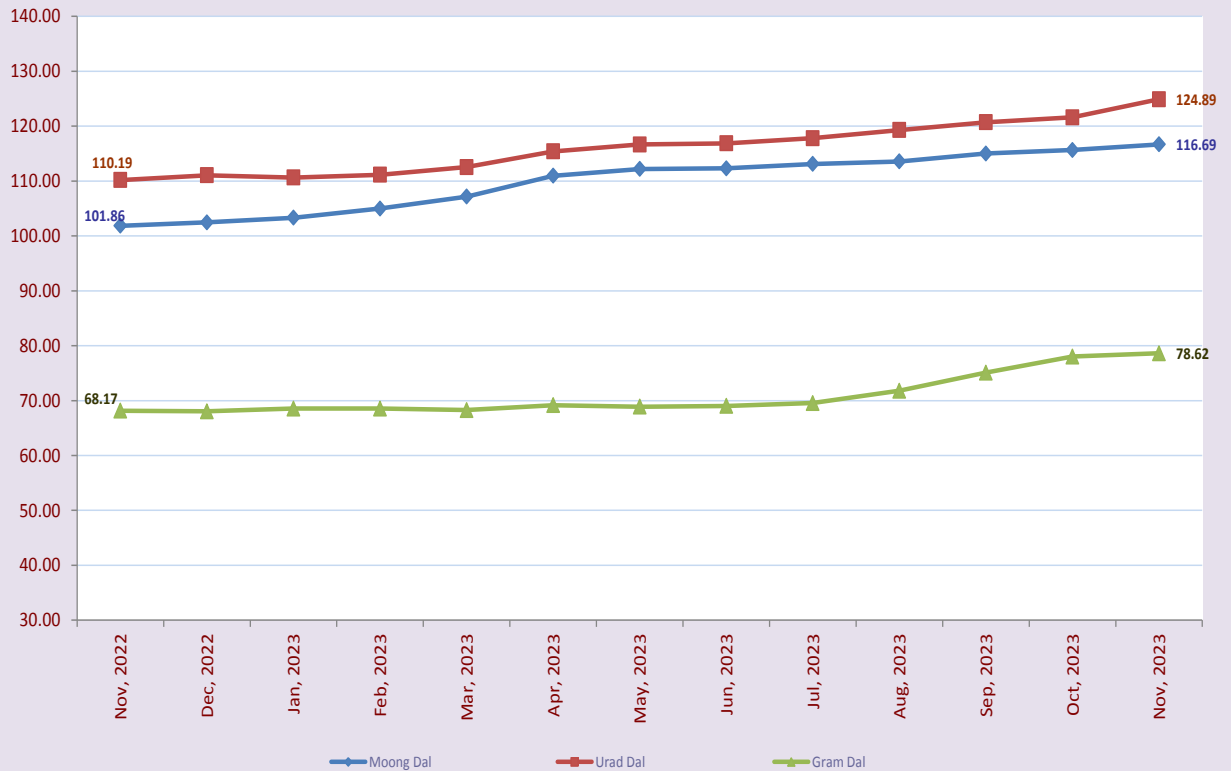
## TRENDS IN RETAIL PRICES OF ESSENTIAL COMMODITIES (Monthly Average Prices)

NOVEMBER, 2022 to NOVEMBER, 2023

### TRENDS IN RETAIL PRICES OF CEREALS



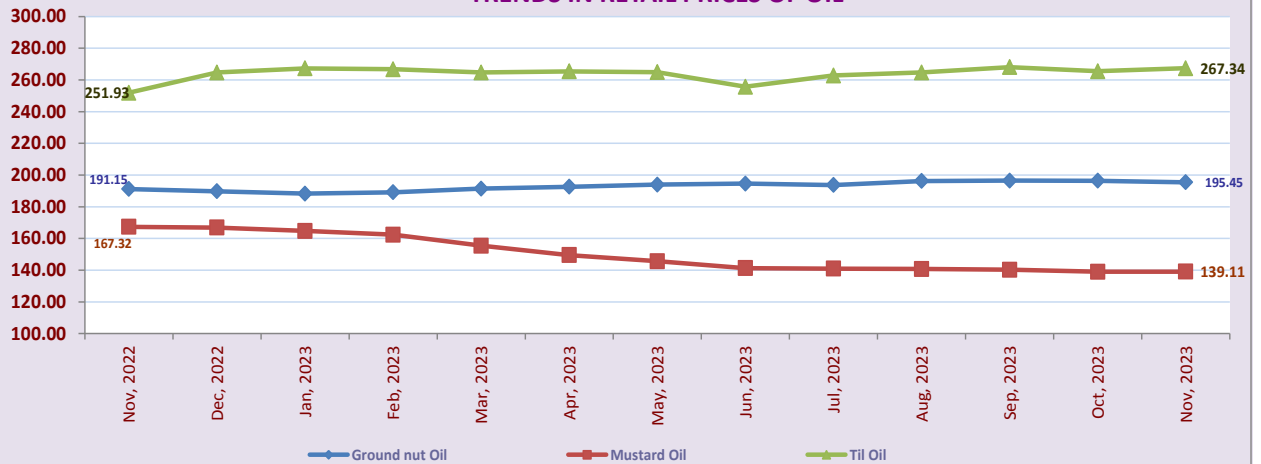
### TRENDS IN RETAIL PRICES OF PULSES



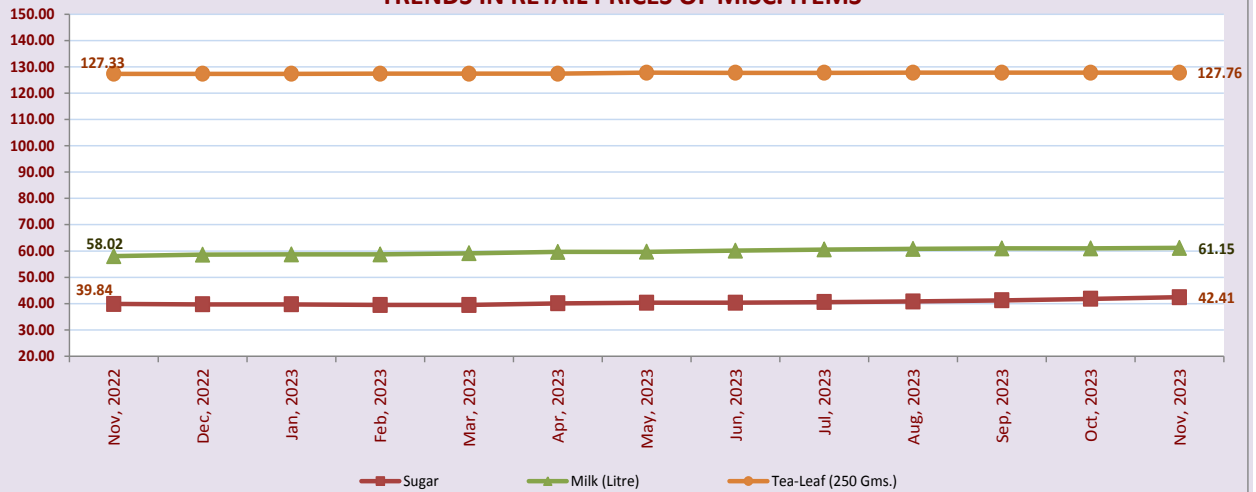
## TRENDS IN RETAIL PRICES OF ESSENTIAL COMMODITIES (Monthly Average Prices)

NOVEMBER, 2022 to NOVEMBER, 2023

### TRENDS IN RETAIL PRICES OF OIL



### TRENDS IN RETAIL PRICES OF MISC. ITEMS



### TRENDS IN RETAIL PRICES ONION & POTATO

