



Government of Rajasthan

**MONTHLY BULLETIN
OF
PRICES
IN
RAJASTHAN**

DECEMBER, 2023

**Directorate of Economics and Statistics,
Statistics Department, Rajasthan**

Yojana Bhawan, Tilak Marg, C-Scheme, Jaipur (302005)

MONTHLY BULLETIN OF PRICE INDICES & It's TREND IN RAJASTHAN For the Month of DECEMBER, 2023

Under the Monthly Price Review for the month of DECEMBER, 2023 the State Wholesale Price Index (Base 1999-2000=100) and Monthly Retail Price Review of 39 Essential Commodities in Rajasthan released by the Department in the review of the month as well as The Rajasthan State and All India Consumer Price Index (Rural, Urban and Combined) released by the NSO, Ministry of Statistics & Programme Implementation, New Delhi and Consumer Price Index (Industrial Workers) released by Labour Bureau, Shimla has been included.

1. INDEX NUMBER OF WHOLESALE PRICE (WPI) IN RAJASTHAN (B.Y. 1999-2000=100) THE ANNUAL RATE OF INFLATION (Year on Year %): The General Index of Wholesale Price in Rajasthan stood at 390.36 (Final) end of DECEMBER, 2023 which was 390.06 in DECEMBER, 2022. The annual rate of inflation on the above basis stood at 0.08 percent for the month of DECEMBER, 2023 (over December, 2022) against 0.24 percent recorded in November, 2023. The inflation rate for the month of December, 2023 has registered a slight decline as compared to the month of November, 2023. It's mainly due to decrease in the prices of primary articles group by (-) 0.35 percent, Fuel, Power, Light & Lubricants group by 0.57 and Manufactured Product by 0.18 percent. This rate has been 0.92 percent in September, 2023, 0.86 percent in October, 2023, 0.24 percent in November, 2023 and 0.08 percent in December, 2023 as compared to the corresponding months of the previous year respectively in the last four months. The annual change in the components of WPI index and inflation in the last three months is given below table of this report.

**Wholesale Price Index (by Major Commodity Group) of Rajasthan
for the month of DECEMBER, 2023**

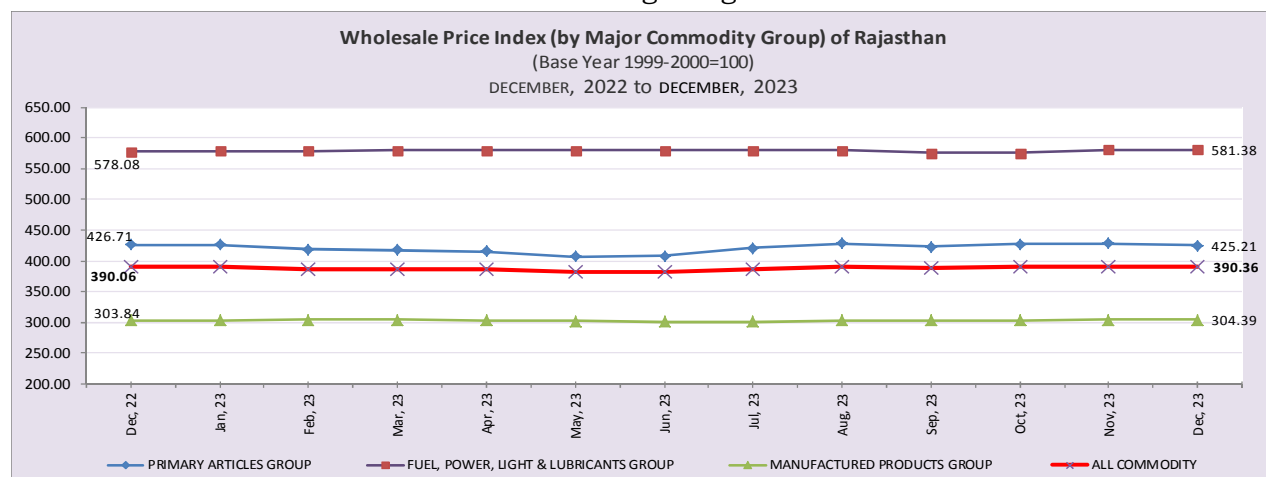
(Base year 1999-2000=100)

Index Numbers & Annual Rate of Inflation (Y-o-Y in %)

S. No.	Major Group/Subgroup	Weight	OCTOBER, 2023		NOVEMBER, 2023		DECEMBER, 2023(F)	
			Index	Inflation	Index	Inflation	Index	Inflation
1	Primary Articles	33.894	427.75	1.73	428.85	-0.08	425.21	-0.35
	(A)- Agricultural Articles	29.933	421.12	0.82	421.76	-1.32	417.68	-1.66
	(B)- Minerals	3.961	477.77	8.26	482.41	8.97	482.13	9.17
2	Fuel, Power, Light & Lubricants	16.253	575.69	-0.13	581.26	0.71	581.38	0.57
3	Manufactured Products	49.853	303.57	0.64	303.99	0.26	304.39	0.18
	General Index (All Commodities)	100.00	389.89	0.86	391.38	0.24	390.36	0.08

Note : F- Final Index

The month wise trends are reflected in the diagram given below:



Month over Month Change of WPI-RAJASTHAN:

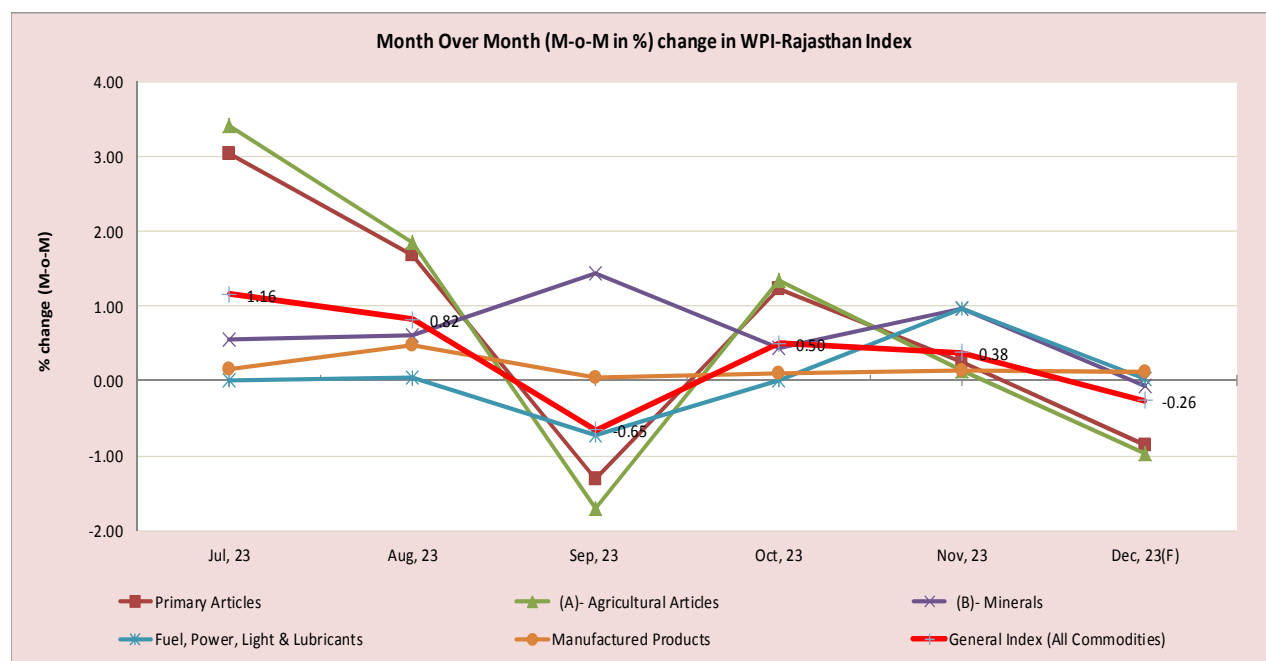
The General Wholesale Price Index for Rajasthan stood at 390.36 (Final) for DECEMBER, 2023 as against 391.38 for NOVEMBER, 2023. It is showing a decrease by (-)0.26 percent as compared to the previous month. This is mainly due to showing a decreased in the index of Primary Articles groups by (-)0.85 percent while the index of Fuel, Power, Light & Lubricants group register an increase by 0.02 percent and Manufactured Products group by 0.13 percent during December, 2023 month over the previous month. The month-on-month change in General Index (WPI-Rajasthan) is showing continue down-ward trend since last three months. It showed a declining trend during August-September, 2023 Months but again moved upwards in October, 2023 and again continued to decline during the months of November and December, 2023 over the previous month. The monthly (Month over month) change in WPI-RAJASTHAN index for last six-month is summarized below table & Diagram:

Month Over Month (M-o-M in %) change in WPI-RAJASTHAN

(Base year 1999-2000=100)

S. No.	Major Group/Subgroup	Weight	(M-o-M in %) change in WPI Index #					
			Jul, 23	Aug, 23	Sep, 23	Oct, 23	Nov, 23	Dec, 23(F)
1	2	3	4	5	6	7	8	9
1	Primary Articles	33.894	3.03	1.69	-1.31	1.23	0.26	-0.85
	(A)- Agricultural Articles	29.933	3.41	1.85	-1.71	1.34	0.15	-0.97
	(B)- Minerals	3.961	0.56	0.61	1.43	0.44	0.97	-0.06
2	Fuel, Power, Light & Lubricants	16.253	0.00	0.04	-0.73	0.01	0.97	0.02
3	Manufactured Products	49.853	0.16	0.48	0.04	0.11	0.14	0.13
General Index (All Commodities)		100.00	1.16	0.82	-0.65	0.50	0.38	-0.26

Note: F: Final Index, # Monthly rate of change, based on month over month (M-o-M) WPI calculated over the preceding month



Month over Month Change in Major/Sub Groups of WPI: The movement of the index for the various commodity group is summarized below: (data in table no.1)

(I) Primary Articles: (weight 33.894)

The Index of Primary Articles group stood at 425.21 in DECEMBER, 2023 which was 428.85 in NOVEMBER, 2023 registered a decrease by 0.85 percent over the preceding month, which is mainly due to showing a decreased in the index of the Agricultural Articles sub-group by 0.97 percent and Minerals sub-group by 0.06 percent during the month under review.

(A) Agricultural Articles: The Index of Agricultural Articles sub-group stood at 417.68 in DECEMBER, 2023 whereas it was 421.76 in NOVEMBER, 2023 showing a decrease of 0.97 percent over the previous month. This is mainly due to register a decreased in the Index of Food Articles sub group by 0.41 percent and Non-Food Articles sub group by 2.09 percent over the previous month. In the both sub-group the index of Pulses category showing a decreased by 2.65 percent, Fruit by 1.16 percent, Vegetables by 24.73 percent, Milk by 0.51 percent, Fibers by 2.71 percent and Oil-seed by 2.44 percent while the index of Cereals category register an increase by 1.65 percent, Egg, Meat & Fish by 0.34 percent, Condiments & Spices by 4.10 percent and Other non-food articles by 0.15 percent whereas the index of one Item i.e. Other food articles category remains unchanged during the month under review. (Total 11 Sub-Groups)

(B) Minerals: The index of Minerals sub-group stood at 482.13 for the month of DECEMBER, 2023 which was 482.41 for the month of NOVEMBER, 2023 registered a decrease by 0.06 percent over the previous month. In the Mineral sub-group this is mainly due to showing a decreased in the index of Lime Stone by 1.04 percent and Steatite (soap stone) by 0.05 percent while the index of Lime Stone(Burn) register an increase by 1.21 percent whereas the index of Seven Item i.e. Gypsum, Lead Concentrate, Phosphorite, Silver, Zinc Concentrate, Building Stone and Brick earth (Bricks) remains unchanged during the month under review. (Total 10 Items)

(II) Fuel, Power, Light & Lubricants' group: (weight 16.253)

The index of 'Fuel, Power, Light and Lubricants' Group is stood at 581.38 for the month of DECEMBER, 2023 which was 581.26 for the month of NOVEMBER, 2023 registered an increase by 0.02 percent over the previous month. In this group the index of Coal sub group register an increase by 0.04 percent and Petrol, Diesel & LPG Gas Sub-group by 0.03 percent whereas the index of One Item index i.e. Electricity sub group unchanged during the month under review. (Total 03 sub-Groups)

(III) Manufactured Products Group: (weight 49.853)

The index of Manufactured Products Group was stood at 303.99 ending the month of NOVEMBER, 2023 which is showing an increase of 0.13 percent during the month of DECEMBER, 2023 over the previous month and it's reached at 304.39. In the Manufactured Products Major group the index of Food Products sub-group register an increase by 0.32 percent, Beverage & Tobacco sub-group by 0.11 percent, Chemical by 0.26 percent, Basic Precious & non-ferrous Metals by 0.13 percent and General Purpose Machinery by 0.01 percent whereas the index of Five sub-group i.e. Spinning, Weaving & Finishing sub-group, Wood & Wood Products sub-group, Publishing sub-group, Non-Metallic & Mineral Products sub-group and Motor Vehicles sub-group remains unchanged during the month under review. (Total 10 sub-Groups).

2. Consumer Price Indices

(i) General Consumer Price Index (Rural, Urban & Combined) (Base Year 2012=100)

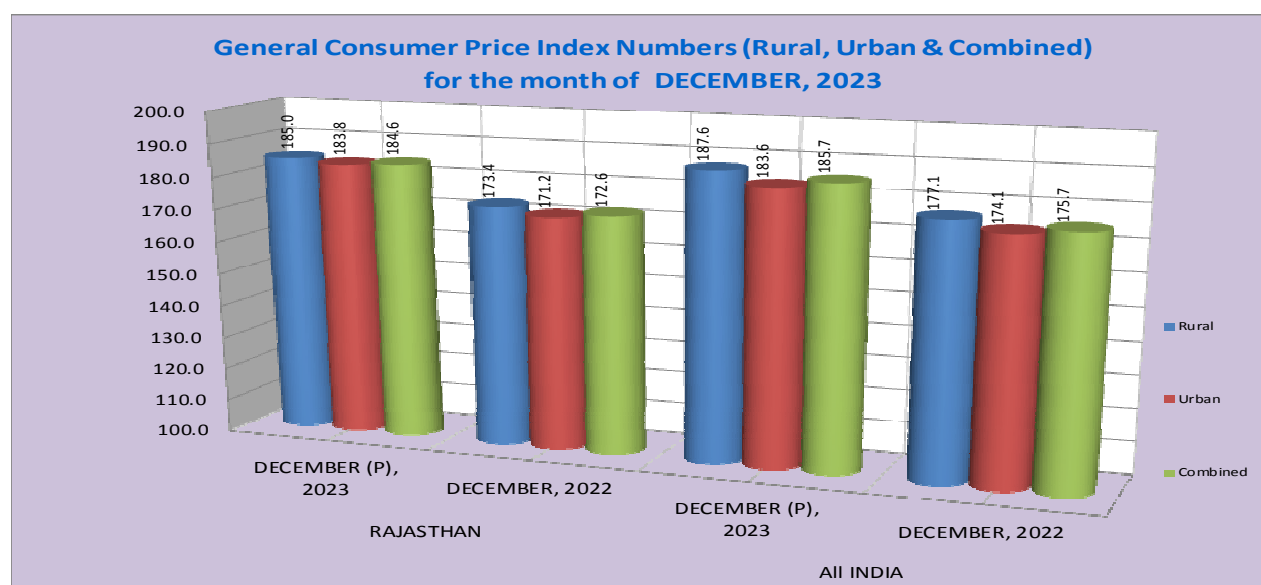
The National Statistical Office (NSO), Ministry of Statistics & Programme Implementation releases General Consumer Price Indices (CPI-Rural, Urban & Combined) for all India and States/UT's separately. The General Consumer Price Index of **Rajasthan** for Rural, Urban and Combined sector showing year on year inflation rate (in %) of 6.69 percent, 7.36 percent and 6.95 percent respectively in the month of DECEMBER, 2023 over the same month of previous year. Similarly The **All India** General Consumer Price Index of Rural, Urban and Combined sector showing inflation rate (in %) of 5.93 percent, 5.46 percent and 5.69 percent respectively in the month of DECEMBER, 2023 over the same month of the previous year.

Rajasthan and All India CPI-R,U&C based Inflation Rate (%) on Point to Point (Year to Year) basis i.e. from the current month to the corresponding month of the previous year i.e. December (P), 2023 over December, 2022 in the table below According to :-

**Consumer Price Index (Rural, Urban & Combined)
Rajasthan & All India (Y-o-Y) inflation rate (%) based on CPI (R,U&C) for
Month of DECEMBER, 2023 (Base year 2012=100)**

S. No.	Index for the Month	Rajasthan			All India		
		Rural	Urban	Combined	Rural	Urban	Combined
1	2	3	4	5	6	7	8
1	DECEMBER (P), 2023	185.0	183.8	184.6	187.6	183.6	185.7
2	DECEMBER, 2022	173.4	171.2	172.6	177.1	174.1	175.7
	Percentage Variations during Dec.(P), 2023 over Dec., 2022	6.69	7.36	6.95	5.93	5.46	5.69

Note : P-Provisional



(ii) Consumer Price Index for Industrial Workers (Base Year 2016=100)

The consumer price index for industrial workers is an important indicator of the average change in consumption levels of industrial workers in the country. The Consumer Price Index is calculating and released by Labor Bureau, Shimla. From the month of September 2020, 88 selected industrially developed centers' index is being released in this Series under the Consumer Price Index-IW (Base Year 2016=100), which includes Alwar, Bhilwara and Jaipur centers of Rajasthan.

At the Alwar, Bhilwara and Jaipur Center of the Rajasthan and All India, the index for the month of DECEMBER, 2023 stood at respectively 126.0, 131.2, 124.2 and 138.8 which were 127.4, 131.2, 124.4 and 139.1 in NOVEMBER, 2023. Index are given in Table No-2 of this report. The all-India CPI (IW) based inflation rate (in %) stands at 4.91 percent in December, 2023 as compared to the same month last year.

At the Rajasthan Center (Alwar, Bhilwara & Jaipur) and All India CPI-IW based inflation rate (in %) year on year (i.e. current month over same month of last year, i.e. December, 2023 over December, 2022) for DECEMBER, 2023 are given in below table :-

Consumer Price Index (Industrial Workers)
Rajasthan Centre (Alwar, Bhilwara and Jaipur) & All India (Y-o-Y) inflation rate (%) based on CPI
(IW) for
Month of DECEMBER, 2023 (Base Year 2016 = 100)

S. No.	Commodity Group	ALWAR	BHILWARA	JAIPUR	ALL INDIA
1	2	3	4	5	6
1	General Index - DECEMBER, 2023	126.0	131.2	124.2	138.8
2	General Index - DECEMBER, 2022	127.1	129.8	126.0	132.3
	Percentage Variations during Dec., 2023 over Dec., 2022	-0.87	1.08	-1.43	4.91

3. Retail Prices of Essential Commodities

Retail prices of 39 essential commodities are being collected on a weekly basis from 33 District Headquarters. The prices of 24 commodities have increased whereas 10 commodities have decreased during the month DECEMBER, 2023 over the previous month. while the prices of Four Commodity :- Salt, Cigarette (10 in 1 packet), Biri(per bundle,) and Cooking Gas (LPG14.2 kg.) Unchanged whereas PDS Item Kerosene Oil (Ration) price not shown up due to Nil allotment by Food & Civil Supply Department during the month under review. The prices of Wheat showing an increased by 0.80 percent, Barley by 0.75 percent, Gram by 0.80 percent, Rice (sela) by 1.09 percent, Bajra by 1.72 percent, Jowar by 0.50 percent, Maize by 0.71 percent, Atta by 0.73 percent, Moong Dal (without husk) 0.21 percent, Urad dal (without husk) by 0.75 percent, Arhar Dal by 1.58 percent, Gram Dal by 0.34 percent, Til oil by 1.14 percent, Ghee (Desi) by 0.90 percent, Sugar by 1.32 percent, Milk (Buff.) by 0.38 percent, Egg (Hen) by 2.63 percent, Meat (Goat) by 0.82 percent, Okra by 16.79 percent, Charcoal by 0.08 percent, Firewood by 0.22 percent, Washing soap by 0.18 percent, Toilet soap by 0.41 percent, Tea Leaf (per 245g packet) by 0.17 percent during the month under review over preceding month while the prices of Besan decreased by 0.18 percent, Groundnut oil by 0.15 percent, Mustard oil by 0.47 percent, Rapeseed oil by 0.56 percent, Vanaspati ghee by 0.30 percent, Chilies(dry-whole) by 0.30 percent, Gur by 0.91 percent, Potato by 5.61percent, Onion by 20.02 percent and Tomato by 6.96 percent during the month under review over preceding month. The details are given in Table No-3 of this report. (Total 39 items)

Wholesale Price Index (Major Group / Sub-group / Commodity Group) of Rajasthan
for the month of DECEMBER, 2023

(Base year 1999-2000=100)

Major Group/Subgroup/ Commodity		Wholesale Price Indices			Percentage Variation during DECEMBER, 2023 over	
		DECEMBER (F)	NOVEMBER	DECEMBER	NOVEMBER	DECEMBER
		2023	2023	2022	2023	2022
General Index (All Commodity)		390.36	391.38	390.06	-0.26	0.08
(I) Primary Articles		425.21	428.85	426.71	-0.85	-0.35
A	Agricultural Articles	417.68	421.76	424.73	-0.97	-1.66
A-1	Food Articles	422.00	423.72	406.22	-0.41	3.88
	ai Cereals	418.73	411.92	422.33	1.65	-0.85
	aii Pulses	437.13	449.05	404.19	-2.65	8.15
	bi Fruit	288.15	291.54	341.57	-1.16	-15.64
	bii Vegetables	449.50	597.20	324.77	-24.73	38.41
	c Milk	413.01	415.12	397.77	-0.51	3.83
	d Eggs, Meat & Fish	492.20	490.53	459.00	0.34	7.23
	e Condiments & Spices	500.59	480.87	436.74	4.10	14.62
	f Other Food Articles	308.27	308.27	308.27	0.00	0.00
A-2	Non-Food Articles	409.16	417.89	461.26	-2.09	-11.30
	a Fibers	398.11	409.19	521.08	-2.71	-23.60
	b Oil-Seed	413.51	423.84	471.44	-2.44	-12.29
	c Other non-food	402.78	402.17	352.78	0.15	14.17
B	Minerals	482.13	482.41	441.65	-0.06	9.17
	1 Gypsum	1410.18	1410.18	1316.43	0.00	7.12
	2 Lead concentrate	606.29	606.29	606.29	0.00	0.00
	3 Lime Stone	296.74	299.86	309.38	-1.04	-4.09
	4 Phosphorite	412.51	412.51	339.16	0.00	21.63
	5 Silver	924.88	924.85	777.52	0.00	18.95
	6 Steatite (Soap Stone)	458.80	459.02	457.57	-0.05	0.27
	7 Zinc Concentrate	415.09	415.09	415.09	0.00	0.00
	8 Building Stone	528.38	528.38	453.71	0.00	16.46
	9 Lime Stone (Burn)	428.82	423.70	358.12	1.21	19.74
	10 Brick earth (Bricks)	341.82	341.82	341.82	0.00	0.00
(II) Fuel, Power, Light & lubricants:		581.38	581.26	578.08	0.02	0.57
	1 Coal	399.68	399.54	386.08	0.04	3.52
	2 Petrol, Diesel & LP Gas	631.03	630.83	626.70	0.03	0.69
	3 Electricity	538.94	538.94	538.94	0.00	0.00
(III) Manufactured products:		304.39	303.99	303.84	0.13	0.18
	A Food Products	375.76	374.58	406.07	0.32	-7.46
	B Beverage & Tobacco	432.72	432.26	400.29	0.11	8.10
	C Spinning Weaving & Finishing	262.38	262.37	259.83	0.00	0.98
	D Wood & Wood products	357.20	357.20	357.20	0.00	0.00
	E Publishing	586.67	586.67	586.67	0.00	0.00
	F Chemical	225.53	224.95	216.27	0.26	4.28
	G Non-Metalic & Mineral Products	280.54	280.54	268.68	0.00	4.41
	H Basic Precious & non-Ferrous Metals	456.74	456.16	442.66	0.13	3.18
	I General Purpose Machinery	212.23	212.21	211.36	0.01	0.41
	J Motor Vehicles	250.32	250.32	250.12	0.00	0.08

Note : F-Final Index

**Consumer Price Index for Industrial Workers of
Alwar, Bhilwara, Jaipur and All India Centres
(Base Year 2016 = 100)**

S. No.	Commodity Group	ALWAR		Percentage variation during Dec.,23 over Nov.,23	BHILWARA		Percentage variation during Dec.,23 over Nov.,23	JAIPUR		Percentage variation during Dec.,23 over Nov.,23	ALL INDIA		Percentage variation during Dec.,23 over Nov.,23
		DECEMBER	NOVEMBER		DECEMBER	NOVEMBER		DECEMBER	NOVEMBER		DECEMBER	NOVEMBER	
		2023	2023		2023	2023		2023	2023		2023	2023	
1.	Food & Beverages	132.8	136.1	-2.42	135.9	136.6	-0.51	143.8	144.2	-0.28	142.8	143.9	-0.76
2.	Pan,Supari, Tobacco and Intoxicants	142.7	142.7	0.00	133.7	139.5	-4.16	117.7	117.7	0.00	157.8	157.7	0.06
3	Clothing & Footwear	123.0	123.0	0.00	134.9	134.9	0.00	136.3	136.3	0.00	141.1	140.8	0.21
4.	Housing	114.1	114.1	0.00	117.3	117.3	0.00	116.8	116.8	0.00	125.7	125.7	0.00
5	Fuel & Light	118.8	118.8	0.00	96.5	95.7	0.84	73.7	73.7	0.00	161.8	161.9	-0.06
6.	Miscellaneous	125.2	125.1	0.08	137.8	136.5	0.95	119.0	119.0	0.00	135.5	135.2	0.22
	General Index	126.0	127.4	-1.10	131.2	131.2	0.00	124.2	124.4	-0.16	138.8	139.1	-0.22

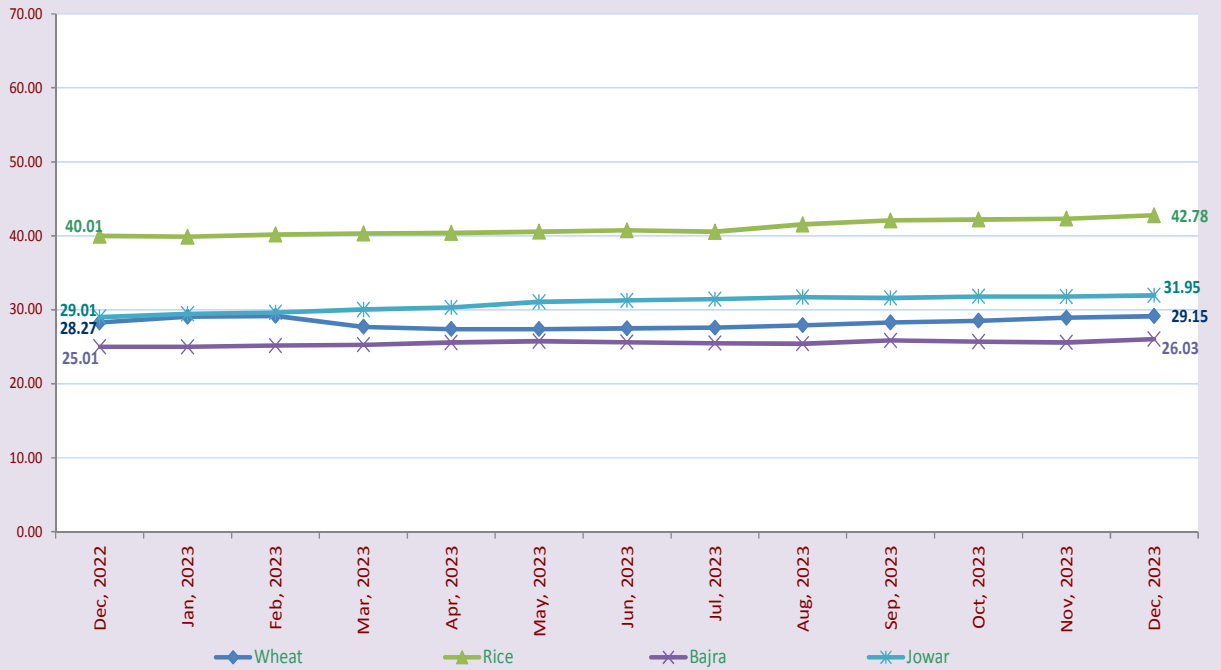
**Retail Prices of Essential Commodities in Rajasthan on the basis of
Weekly Prices collected from District Headquarters
Month : DECEMBER, 2023**

S. No	Commodities	Unit	Monthly Average Prices (Prices in Rupees for given unit's)			Percentage variation during DECEMBER, 2023 over	
			DECEMBER	NOVEMBER	DECEMBER	NOVEMBER	DECEMBER
			2023	2023	2022	2023	2022
1	2	3	4	5	6	7	8
1	Wheat	KG	29.15	28.92	28.27	0.80	3.11
2	Barley	KG	29.54	29.32	33.31	0.75	-11.32
3.	Gram	KG	68.27	67.73	60.46	0.80	12.92
4.	Rice (Sela)	KG	42.78	42.32	40.01	1.09	6.92
5.	Bajra	KG	26.03	25.59	25.01	1.72	4.08
6.	Jowar	KG	31.95	31.79	29.01	0.50	10.13
7.	Maize	KG	29.63	29.42	28.94	0.71	2.38
8	Atta	KG	33.15	32.91	31.43	0.73	5.47
9	Moong dal (Without husk)	KG	116.93	116.69	102.47	0.21	14.11
10	Urad dal (Without husk)	KG	125.83	124.89	111.06	0.75	13.30
11	Arhar dal	KG	148.14	145.83	113.75	1.58	30.23
12	Gram dal	KG	78.89	78.62	68.04	0.34	15.95
13	Besan	KG	84.72	84.87	74.36	-0.18	13.93
14	Groundnut Oil	KG	195.16	195.45	189.73	-0.15	2.86
15	Mustard Oil	KG	138.45	139.11	166.86	-0.47	-17.03
16	Til Oil	KG	270.38	267.34	264.67	1.14	2.16
17	Rapeseed Oil	KG	124.11	124.81	147.90	-0.56	-16.09
18	Vanaspati Ghee (p.Ltr.)	LTR.	124.78	125.16	137.22	-0.30	-9.07
19	Ghee (deshi)	KG	752.41	745.68	734.33	0.90	2.46
20	Chilies dry (Whole)	KG	297.24	298.13	276.81	-0.30	7.38
21	Gur	KG	48.03	48.47	43.61	-0.91	10.14
22	Sugar	KG	42.97	42.41	39.72	1.32	8.18
23	Salt	KG	27.55	27.55	27.52	0.00	0.11
24	Milk (Buff.) (p.Ltr.)	LTR.	61.38	61.15	58.60	0.38	4.74
25	Egg (Hen) Each	EACH	7.02	6.84	6.58	2.63	6.69
26	Goat Meat	KG	581.18	576.44	546.68	0.82	6.31
27	Potato	KG	21.18	22.44	25.27	-5.61	-16.19
28	Onion	KG	47.29	59.13	26.48	-20.02	78.59
29	Tomato	KG	35.81	38.49	30.77	-6.96	16.38
30	Okra	KG	60.59	51.88	56.27	16.79	7.68
31	Charcoal	5 KG	155.13	155.00	151.82	0.08	2.18
32	Firewood	5 KG	45.39	45.29	43.10	0.22	5.31
33	Kerosene Oil (p.Ltr.)	LTR.	N.A.	N.A.	N.A.	NA	NA
34	Washing Soap (Wheel Green 250 gms.)	PER CAKE	16.33	16.30	15.10	0.18	8.15
35	Toilet Soap (p. Cake) (Lux 100 gms.)	PER CAKE	29.24	29.12	28.10	0.41	4.06
36	Cigarette (10 in 1 packet)	PER PKT.	78.97	78.97	77.61	0.00	1.75
37	Biri (Per Bundle)	25 BIRI	24.06	24.06	23.74	0.00	1.35
38	Tea Leaf (per packet)	245 GRAM	127.98	127.76	127.35	0.17	0.49
39	Cooking Gas (L.P.G.) 14.2 Kg. Refill	PER CYLINDER	922.30	922.30	1071.64	0.00	-13.94

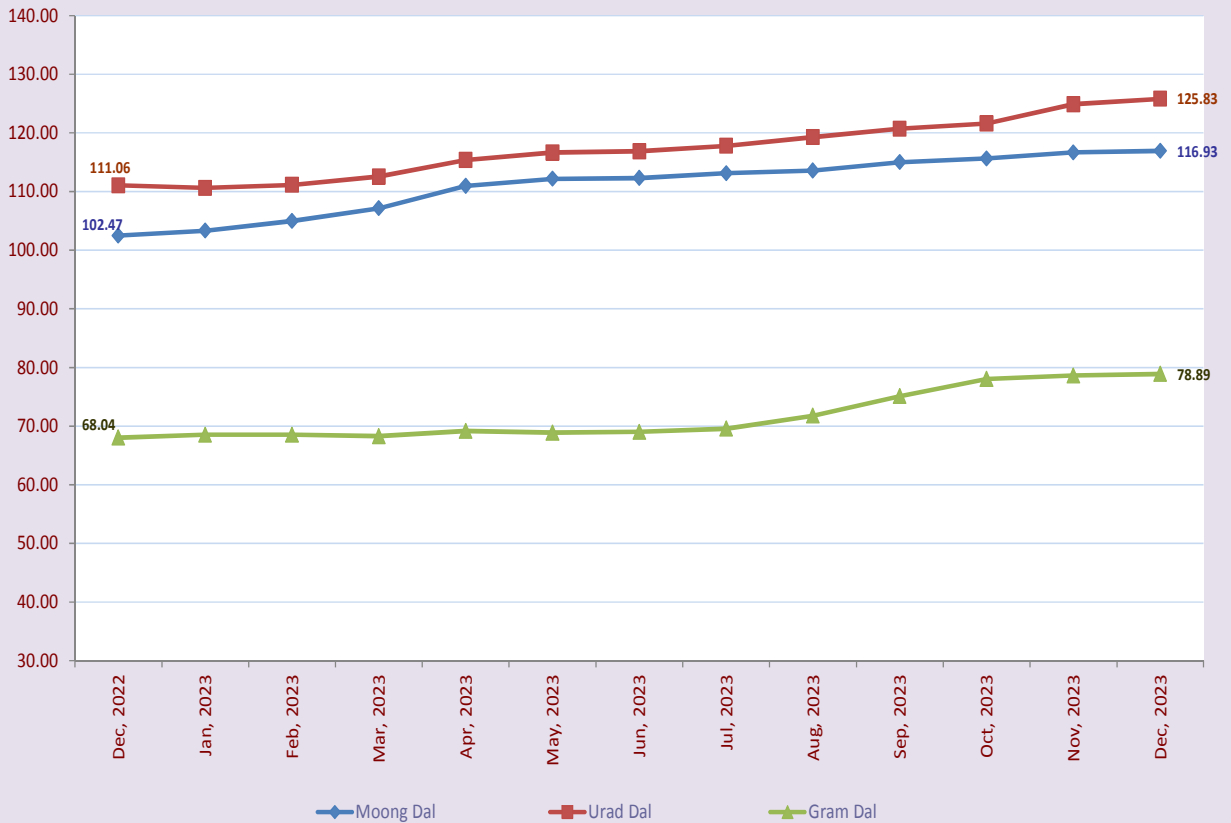
TRENDS IN RETAIL PRICES OF ESSENTIAL COMMODITIES (Monthly Average Prices)

DECEMBER, 2022 to DECEMBER, 2023

TRENDS IN RETAIL PRICES OF CEREALS



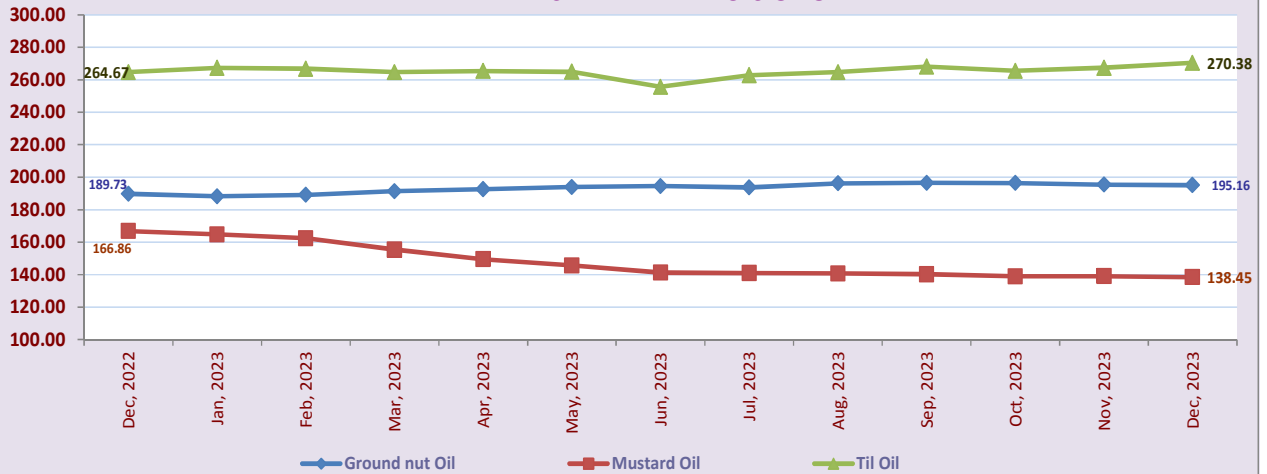
TRENDS IN RETAIL PRICES OF PULSES



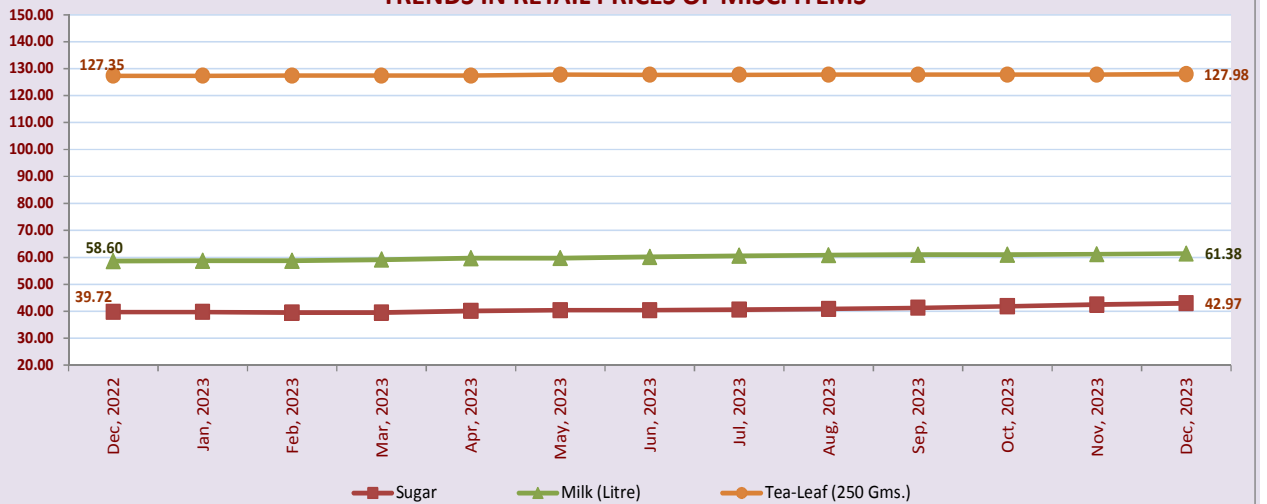
TRENDS IN RETAIL PRICES OF ESSENTIAL COMMODITIES (Monthly Average Prices)

DECEMBER, 2022 to DECEMBER, 2023

TRENDS IN RETAIL PRICES OF OIL



TRENDS IN RETAIL PRICES OF MISC. ITEMS



TRENDS IN RETAIL PRICES ONION & POTATO

