



Government of Rajasthan

**MONTHLY BULLETIN  
OF  
PRICES  
IN  
RAJASTHAN**

**FEBRUARY, 2024**

RajKaj Ref  
6464010  
**Directorate of Economics and Statistics,  
Statistics Department, Rajasthan**

**Yojana Bhawan, Tilak Marg, C-Scheme, Jaipur (302005)**

## MONTHLY BULLETIN OF PRICE INDICES & It's TREND IN RAJASTHAN For the Month of FEBRUARY, 2024

Under the Monthly Price Review for the month of FEBRUARY, 2024 the State Wholesale Price Index (Base 1999-2000=100) and Monthly Retail Price Review of 39 Essential Commodities in Rajasthan released by the Department in the review of the month as well as The Rajasthan State and All India Consumer Price Index (Rural, Urban and Combined) released by the NSO, Ministry of Statistics & Programme Implementation, New Delhi and Consumer Price Index (Industrial Workers) released by Labour Bureau, Shimla has been included.

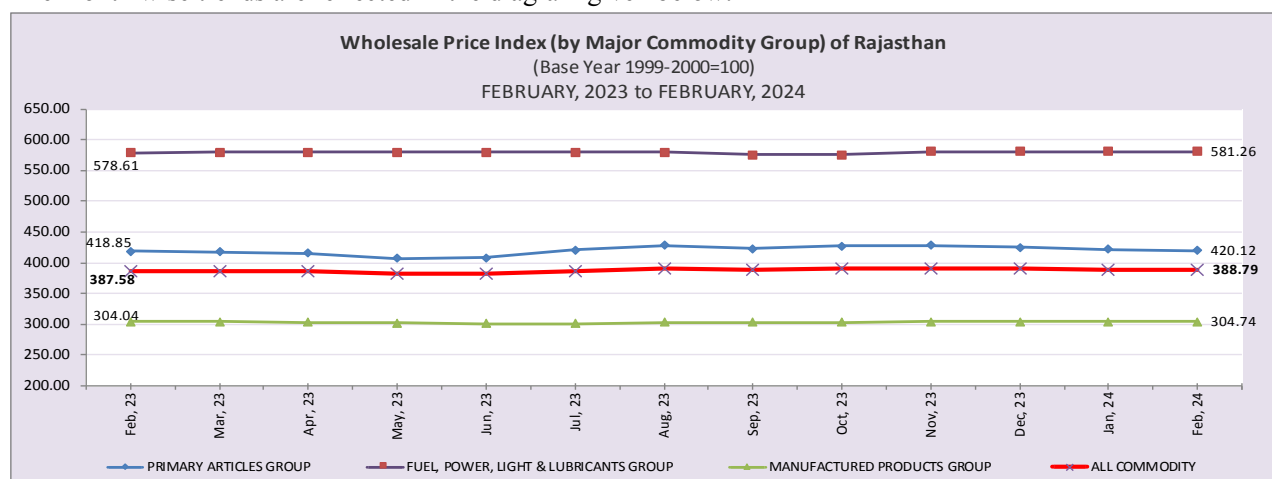
### 1. INDEX NUMBER OF WHOLESALE PRICE (WPI) IN RAJASTHAN (B.Y. 1999-2000=100)

**THE ANNUAL RATE OF INFLATION (Year on Year %):** The General Index of Wholesale Price in Rajasthan stood at 388.79 (Final) end of FEBRUARY, 2024 which was 387.58 in FEBRUARY, 2023. The annual rate of inflation on the above basis stood at 0.31 percent for the month of FEBRUARY, 2024 (over February, 2023) against (-) 0.13 percent recorded in January, 2024. The inflation rate for the month of February, 2024 has registered an increase as compared to the month of January, 2024. The main reason for this is the increase of 0.30 percent in the prices of Primary Articles group. In the last four months, this rate has been 0.24 percent in November, 2023, 0.08 percent in December, 2023, (-)0.13 percent in January, 2024 and 0.31 percent in February, 2024 respectively as compared to the same period last year. The annual change in the components of WPI index and inflation in the last three months is given below table of this report.

Wholesale Price Index (by Major Commodity Group) of Rajasthan for the month of FEBRUARY, 2024 (Base year 1999-2000=100)								
Index Numbers & Annual Rate of Inflation (Y-o-Y in %)								
S. No.	Major Group/ Subgroup	Weight	DECEMBER, 2023		JANUARY, 2024		FEBRUARY, 2024 (F)	
			Index	Inflation	Index	Inflation	Index	Inflation
1	2	3	4	5	6	7	8	9
1	Primary Articles	33.894	425.21	-0.35	422.15	-0.98	420.12	0.30
	(A)- Agricultural Articles	29.933	417.68	-1.66	414.04	-2.37	411.36	-0.95
	(B)- Minerals	3.961	482.13	9.17	483.43	9.10	486.28	9.11
2	Fuel, Power, Light & Lubricants	16.253	581.38	0.57	581.28	0.48	581.26	0.46
3	Manufactured Products	49.853	304.39	0.18	304.76	0.31	304.74	0.23
	<b>General Index (All Commodities)</b>	<b>100.00</b>	<b>390.36</b>	<b>0.08</b>	<b>389.49</b>	<b>-0.13</b>	<b>388.79</b>	<b>0.31</b>

Note : F- Final Index

The month wise trends are reflected in the diagram given below:



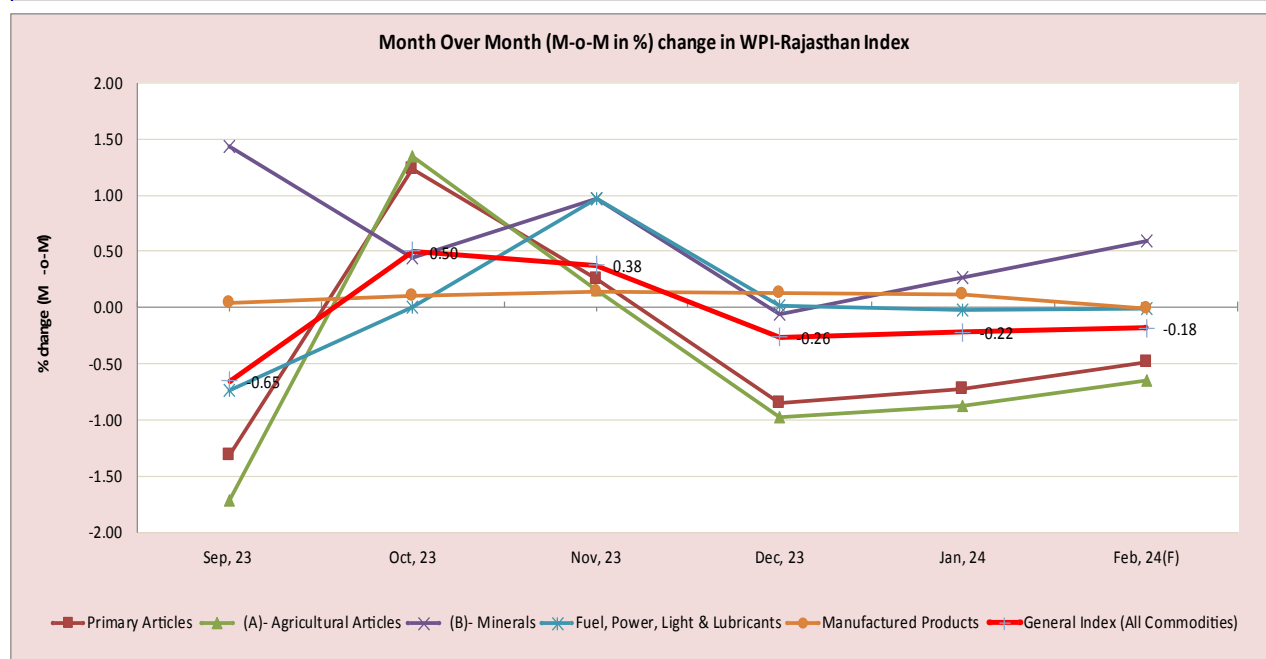
RajKaj Ref  
6464010

## Month over Month Change of WPI-RAJASTHAN:

The General Wholesale Price Index for Rajasthan stood at 388.79 (Final) for FEBRUARY, 2024 as against 389.49 for JANUARY, 2024. It is showing a decrease by (-)0.18 percent as compared to the previous month. This is mainly due to showing a decreased in the index of Primary Articles groups by (-)0.48 percent, Fuel, Power, Light & Lubricants group by (-) 0.003 percent and Manufactured Products group by (-)0.01 percent during February, 2024 month over the previous month. The month-on-month change in the General Index (WPI-Rajasthan) is showing a continuous declining trend for the last three months, it has declined slightly in comparison to the month of January, 2024. It showed an increasing trend during the months of October, 2023 and after it's again continued to decline during the months of November 2023 to February, 2024 as compared to the previous month. The monthly (Month over month) change in WPI-RAJASTHAN index for last six-month is summarized below table & Diagram:

Month Over Month (M-o-M in %) change in WPI-RAJASTHAN								
(Base year 1999-2000=100)								
S. No.	Major Group/ Subgroup	Weight	(M-o-M in %) change in WPI Index #					
			Sep, 23	Oct, 23	Nov, 23	Dec, 23	Jan, 24	Feb, 24(F)
1	2	3	4	5	6	7	8	9
1	Primary Articles	33.894	-1.31	1.23	0.26	-0.85	-0.72	-0.48
	(A)- Agricultural Articles	29.933	-1.71	1.34	0.15	-0.97	-0.87	-0.65
	(B)- Minerals	3.961	1.43	0.44	0.97	-0.06	0.27	0.59
2	Fuel, Power, Light & Lubricants	16.253	-0.73	0.01	0.97	0.02	-0.02	-0.003
3	Manufactured Products	49.853	0.04	0.11	0.14	0.13	0.12	-0.01
<b>General Index (All Commodities)</b>		<b>100.00</b>	<b>-0.65</b>	<b>0.50</b>	<b>0.38</b>	<b>-0.26</b>	<b>-0.22</b>	<b>-0.18</b>

Note: F: Final Index, # Monthly rate of change, based on month over month (M-o-M) WPI calculated over the preceding month



RajKaj Ref  
6464010

**Month over Month Change in Major/Sub Groups of WPI:** The movement of the index for the various commodity groups is summarized below: (data in table no.1)

**(I) Primary Articles: (weight 33.894)**

The Index of Primary Articles group stood at 420.12 in FEBRUARY, 2024 which was 422.15 in JANUARY, 2024 registered a decrease by (-)0.48 percent over the preceding month, which is mainly due to showing a decreased in the index of the Agricultural Articles sub-group by (-)0.65 percent while the index of Minerals sub-group registered an increase by 0.59 percent during the month under review :

**(A) Agricultural Articles:** The Index of Agricultural Articles sub-group stood at 411.36 in FEBRUARY, 2024 whereas it was 414.04 in JANUARY, 2024 showing a decrease of (-)0.65 percent over the previous month. This is mainly due to register a decreased in the Index of Non-Food Articles sub group by (-)2.74 percent while the index of Food Articles sub group showing an increase by 0.37 percent over the previous month. In the both sub-group the index of Cereals category showing a decreased by (-)0.71 percent, Milk by (-)0.36 percent, Fibers by (-)1.34 percent, Oil-seed by (-)3.64 percent and Other non-food articles by (-)0.38 percent while the index of Pulses category register an increase by 1.65 percent, Fruit by 18.04 percent, Vegetables by 0.60 percent, Egg, Meat & Fish by 0.62 percent and Condiments & Spices by 0.04 percent whereas the index of one Item i.e. Other food articles category remains unchanged during the month under review. (Total 11 Sub-Groups)

**(B) Minerals:** The index of Minerals sub-group stood at 486.28 for the month of FEBRUARY, 2024 which was 483.43 for the month of JANUARY, 2024 registered an increase by 0.59 percent over the previous month. In the Mineral sub-group this is mainly due to showing an increase in the index of Lime Stone by 18.12 percent and Brick earth (Bricks) by 0.51 percent while the index of Phosphorite register a decreased by (-)8.89 percent and Silver by (-)0.37 percent whereas the index of Six Item i.e. Gypsum, Lead Concentrate, Steatite (Soap Stone), Zinc Concentrate, Building Stone and Lime Stone(Burn) remains unchanged during the month under review. (Total 10 Items)

**(II) Fuel, Power, Light & Lubricants' group: (weight 16.253)**

The index of 'Fuel, Power, Light and Lubricants' Group is stood at 581.26 for the month of FEBRUARY, 2024 which was 581.28 for the month of JANUARY, 2024 registered a decrease by (-)0.003 percent over the previous month. In this group the index of Coal Sub-group showing a decreased by 0.07 percent whereas the index of Two Item index i.e. Petrol, Diesel & LPG Gas sub group and Electricity sub group remains unchanged during the month under review. (Total 03 sub-Groups)

**(III) Manufactured Products Group: (weight 49.853)**

The index of Manufactured Products Group was stood at 304.76 ending the month of JANUARY, 2024 which is showing a decrease of (-)0.01 percent during the month of FEBRUARY, 2024 over the previous month and it's reached at 304.74. In the Manufactured Products Major group the index of Food Products sub-group registered a decreased by (-)0.38 percent and Non-Metallic & Mineral Products sub-group by (-)0.03 percent while the index of Spinning, Weaving & Finishing sub-group showing an increase by 0.21 percent, Wood & Wood Products sub-group by 0.57 percent, Chemical by 0.41 percent, Basic Precious & non-ferrous Metals sub-group by 0.01 percent and General Purpose Machinery by 0.07 percent whereas the index of Three sub-group i.e. Beverage & Tobacco sub-group, Publishing sub-group and Motor Vehicles sub-group remains unchanged during the month under review. (Total 10 sub-Groups).

**RajKaj Ref  
6464010**

## 2. Consumer Price Indices

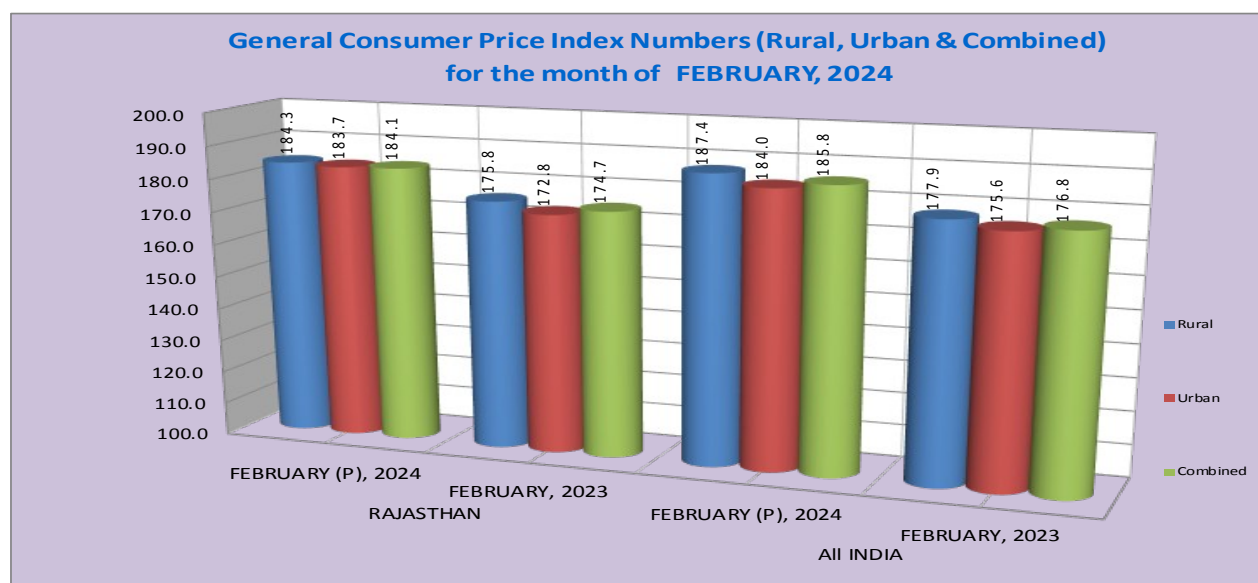
### (i) General Consumer Price Index (Rural, Urban & Combined) (Base Year 2012=100)

The National Statistical Office (NSO), Ministry of Statistics & Programme Implementation releases General Consumer Price Indices (CPI-Rural, Urban & Combined) for all India and States/UT's separately. The General Consumer Price Index of **Rajasthan** for Rural, Urban and Combined sector showing year on year inflation rate (in %) of 4.84 percent, 6.31 percent and 5.38 percent respectively in the month of FEBRUARY, 2024 over the same month of previous year. Similarly The **All India** General Consumer Price Index of Rural, Urban and Combined sector showing inflation rate (in %) of 5.34 percent, 4.78 percent and 5.09 percent respectively in the month of FEBRUARY, 2024 over the same month of the previous year.

Rajasthan and All India CPI-R,U&C based Inflation Rate (%) on Point to Point (Year to Year) basis i.e. from the current month to the corresponding month of the previous year i.e. February (Provisional), 2024 over February, 2023 in the table below According to :-

Consumer Price Index (Rural, Urban & Combined)							
Rajasthan & All India (Y-o-Y) inflation rate (%) based on CPI (R,U&C) for							
Month of FEBRUARY, 2024 (Base year 2012=100)							
S. No.	Index for the Month	Rajasthan			All India		
		Rural	Urban	Combined	Rural	Urban	Combined
1	2	3	4	5	6	7	8
1	<b>FEBRUARY (P), 2024</b>	<b>184.3</b>	<b>183.7</b>	<b>184.1</b>	<b>187.4</b>	<b>184.0</b>	<b>185.8</b>
2	<b>FEBRUARY, 2023</b>	<b>175.8</b>	<b>172.8</b>	<b>174.7</b>	<b>177.9</b>	<b>175.6</b>	<b>176.8</b>
	<b>Percentage Variations during Feb.(P), 2024 over Feb., 2023</b>	<b>4.84</b>	<b>6.31</b>	<b>5.38</b>	<b>5.34</b>	<b>4.78</b>	<b>5.09</b>

Note : P-Provisional



RajKaj Ref  
6464010

## (ii) Consumer Price Index for Industrial Workers (Base Year 2016=100)

The consumer price index for industrial workers is an important indicator of the average change in consumption levels of industrial workers in the country. The Consumer Price Index is calculating and released by Labor Bureau, Shimla. From the month of September 2020, 88 selected industrially developed centers' index is being released in this Series under the Consumer Price Index-IW (Base Year 2016=100), which includes Alwar, Bhilwara and Jaipur centers of Rajasthan.

At the Alwar, Bhilwara and Jaipur Center of the Rajasthan and All India, the index for the month of JANUARY, 2024 stood at respectively 126.5, 130.7, 125.3 and 138.9 which were 126.0, 131.2, 124.2 and 138.8 in DECEMBER, 2023. Index are given in Table No-2 of this report. The all-India CPI (IW) based inflation rate (in %) stands at 4.59 percent in January, 2024 as compared to the same month last year.

At the Rajasthan Center (Alwar, Bhilwara & Jaipur) and All India CPI-IW based inflation rate (in %) year on year (i.e. current month over same month of last year, i.e. January, 2024 over January, 2023) for JANUARY, 2024 are given in below table :-

Consumer Price Index (Industrial Workers)					
Rajasthan Centre (Alwar, Bhilwara and Jaipur) & All India (Y-o-Y) inflation rate (%) based on CPI (IW) for					
Month of JANUARY, 2024 (Base Year 2016 = 100 )					
S. No.	Commodity Group	ALWAR	BHILWARA	JAIPUR	ALL INDIA
1	2	3	4	5	6
1	General Index - JANUARY, 2024	126.5	130.7	125.3	138.9
2	General Index - JANUARY, 2023	127.1	129.9	126.7	132.8
	Percentage Variations during Jan., 2024 over Jan., 2023	-0.47	0.62	-1.10	4.59

## 3. Retail Prices of Essential Commodities

Retail prices of 39 essential commodities are being collected on a weekly basis from 33 District Headquarters. The prices of 15 commodities have increased whereas 20 commodities have decreased during the month FEBRUARY, 2024 over the previous month. while the prices of Three Commodity :- Rice(sela), Biri(per bundle,) and Cooking Gas (LPG14.2 kg.) Unchanged whereas PDS Item Kerosene Oil (Ration) price not shown up due to nil allotment by Food & Civil Supply Department during the month under review. The prices of Wheat showing an increased by 0.17 percent, Gram by 0.30 percent, Jowar by 0.22 percent, Maize by 0.07 percent, Atta by 0.15 percent, Moong Dal (without husk) 0.41 percent, Ghee (Desi) by 0.13 percent, Milk (Buff.) by 0.23 percent, Tomato by 11.48 percent, Okra by 5.25 percent, Firewood by 0.68 percent, Washing soap by 0.24 percent, Toilet soap by 0.27 percent, Cigarette (10 in 1 packet) by 0.04 percent and Tea Leaf (per 245g packet) by 0.11 percent during the month under review over preceding month while the prices of Barley decreased by 1.09 percent, Bajra by 0.12 percent, Urad dal (without husk) by 0.26 percent, Arhar Dal by 0.12 percent, Gram Dal by 0.54 percent, Besan by 0.44 percent, Groundnut oil by 1.45 percent, Mustard oil by 1.39 percent, Til oil by 0.08 percent, Rapeseed oil by 1.25 percent, Vanaspati ghee by 0.39 percent, Chilies(dry-whole) by 0.87 percent, Gur by 0.17 percent, Sugar by 0.05 percent, Salt by 0.22 percent, Egg (Hen) by 0.28 percent, Meat (Goat) by 0.24 percent, Potato by 2.35 percent, Onion by 13.38 percent and Charcoal by 0.05 percent during the month under review over preceding month. The details are given in Table No-3 of this report. (Total 39 items)

RajKaj Ref  
6464010

## Wholesale Price Index ( Major Group / Sub-group / Commodity Group ) of Rajasthan

for the month of FEBRUARY, 2024

(Base year 1999-2000=100)

Major Group/ Subgroup/ Commodity		Wholesale Price Indices			Percentage Variation during FEBRUARY, 2024 over	
		FEBRUARY (F)	JANUARY	FEBRUARY	JANUARY	FEBRUARY
		2024	2024	2023	2024	2023
<b>General Index (All Commodity)</b>		<b>388.79</b>	<b>389.49</b>	<b>387.58</b>	<b>-0.18</b>	<b>0.31</b>
<b>(I) Primary Articles</b>		<b>420.12</b>	<b>422.15</b>	<b>418.85</b>	<b>-0.48</b>	<b>0.30</b>
<b>A</b>	<b>Agricultural Articles</b>	<b>411.36</b>	<b>414.04</b>	<b>415.30</b>	<b>-0.65</b>	<b>-0.95</b>
<b>A-1</b>	<b>Food Articles</b>	<b>421.36</b>	<b>419.81</b>	<b>409.36</b>	<b>0.37</b>	<b>2.93</b>
	ai Cereals	416.85	419.85	411.74	-0.71	1.24
	aii Pulses	438.73	431.62	403.19	1.65	8.81
	bi Fruit	355.29	300.98	455.05	18.04	-21.92
	bii Vegetables	354.75	352.63	282.53	0.60	25.56
	c Milk	407.03	408.52	402.94	-0.36	1.02
	d Eggs, Meat & Fish	502.97	499.87	454.88	0.62	10.57
	e Condiments & Spices	512.96	512.77	449.92	0.04	14.01
	f Other Food Articles	308.27	308.27	308.27	0.00	0.00
<b>A-2</b>	<b>Non-Food Articles</b>	<b>391.63</b>	<b>402.66</b>	<b>427.01</b>	<b>-2.74</b>	<b>-8.29</b>
	a Fibers	387.02	392.28	497.15	-1.34	-22.15
	b Oil-Seed	391.23	406.00	422.24	-3.64	-7.34
	c Other non-food	398.32	399.85	370.60	-0.38	7.48
<b>B</b>	<b>Minerals</b>	<b>486.28</b>	<b>483.43</b>	<b>445.68</b>	<b>0.59</b>	<b>9.11</b>
	1 Gypsum	1441.43	1441.43	1316.43	0.00	9.50
	2 Lead concentrate	606.29	606.29	606.29	0.00	0.00
	3 Lime Stone	350.53	296.76	317.07	18.12	10.55
	4 Phosphorite	375.84	412.51	339.16	-8.89	10.81
	5 Silver	927.22	930.69	847.67	-0.37	9.38
	6 Steatite (Soap Stone)	458.66	458.66	457.26	0.00	0.31
	7 Zinc Concentrate	415.09	415.09	415.09	0.00	0.00
	8 Building Stone	529.05	529.05	457.83	0.00	15.56
	9 Lime Stone (Burn)	429.48	429.48	379.10	0.00	13.29
	10 Brick earth (Bricks)	343.80	342.07	342.57	0.51	0.36
<b>(II) Fuel, Power, Light &amp; lubricants:</b>		<b>581.26</b>	<b>581.28</b>	<b>578.61</b>	<b>-0.003</b>	<b>0.46</b>
	1 Coal	399.54	399.81	394.14	-0.07	1.37
	2 Petrol, Diesel & LP Gas	630.83	630.83	626.70	0.00	0.66
	3 Electricity	538.94	538.94	538.94	0.00	0.00
<b>(III) Manufactured products:</b>		<b>304.74</b>	<b>304.76</b>	<b>304.04</b>	<b>-0.01</b>	<b>0.23</b>
	A Food Products	374.87	376.30	394.18	-0.38	-4.90
	B Beverage & Tobacco	434.58	434.58	401.03	0.00	8.37
	C Spinning Weaving & Finishing	263.23	262.69	262.32	0.21	0.35
	D Wood & Wood products	360.86	358.83	357.20	0.57	1.02
	E Publishing	586.67	586.67	586.67	0.00	0.00
	F Chemical	227.33	226.40	222.28	0.41	2.27
	G Non-Metalic & Mineral Products	280.54	280.62	267.26	-0.03	4.97
	H Basic Precious & non-Ferrous Metals	456.52	456.47	459.58	0.01	-0.67
	I General Purpose Machinery	212.36	212.21	213.21	0.07	-0.40
	J Motor Vehicles	250.33	250.33	250.23	0.00	0.04

Note : F-Final Index



**Consumer Price Index for Industrial Workers of  
Alwar, Bhilwara, Jaipur and All India Centres  
( Base Year 2016 = 100 )**

S. No.	Commodity Group	ALWAR		Percentage variation during Jan.,24 over Dec.,23	BHILWARA		Percentage variation during Jan.,24 over Dec.,23	JAIPUR		Percentage variation during Jan.,24 over Dec.,23	ALL INDIA		Percentage variation during Jan.,24 over Dec.,23
		JANUARY	DECEMBER		JANUARY	DECEMBER		JANUARY	DECEMBER		JANUARY	DECEMBER	
		2024	2023		2024	2023		2024	2023		2024	2023	
1.	Food & Beverages	133.5	132.8	0.53	133.8	135.9	-1.55	144.1	143.8	0.21	141.9	142.8	-0.63
2.	Pan,Supari, Tobacco and Intoxicants	142.8	142.7	0.07	133.7	133.7	0.00	117.7	117.7	0.00	158.0	157.8	0.13
3	Clothing & Footwear	123.0	123.0	0.00	134.9	134.9	0.00	136.3	136.3	0.00	141.4	141.1	0.21
4.	Housing	115.1	114.1	0.88	119.2	117.3	1.62	121.0	116.8	3.60	128.4	125.7	2.15
5	Fuel & Light	118.8	118.8	0.00	96.7	96.5	0.21	73.7	73.7	0.00	161.8	161.8	0.00
6.	Miscellaneous	125.2	125.2	0.00	137.8	137.8	0.00	119.0	119.0	0.00	135.5	135.5	0.00
	<b>General Index</b>	<b>126.5</b>	<b>126.0</b>	<b>0.40</b>	<b>130.7</b>	<b>131.2</b>	<b>-0.38</b>	<b>125.3</b>	<b>124.2</b>	<b>0.89</b>	<b>138.9</b>	<b>138.8</b>	<b>0.07</b>



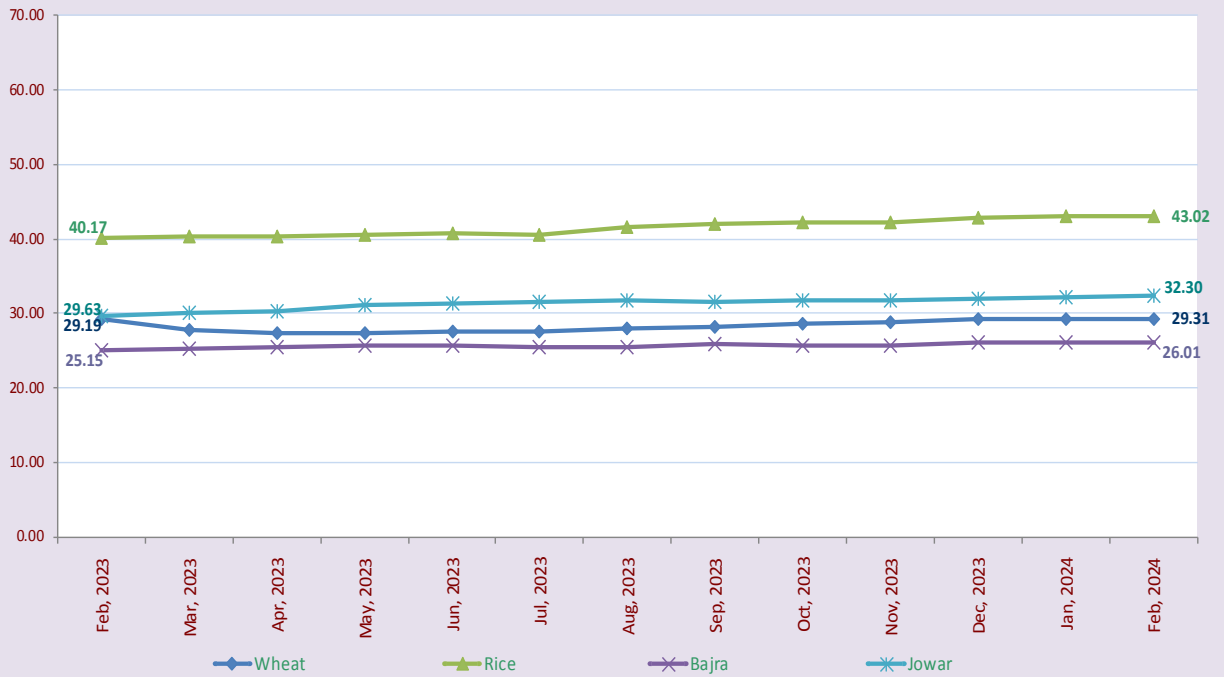
**Retail Prices of Essential Commodities in Rajasthan on the basis of  
Weekly Prices collected from District Headquarters  
Month : FEBRUARY, 2024**

S. No	Commodities	Unit	Monthly Average Prices (Prices in Rupees for given unit's)			Percentage variation during FEBRUARY, 2024 over	
			FEBRUARY	JANUARY	FEBRUARY	JANUARY	FEBRUARY
			2024	2024	2023	2024	2023
1	2	3	4	5	6	7	8
1	Wheat	KG	29.31	29.26	29.19	0.17	0.41
2	Barley	KG	29.13	29.45	33.19	-1.09	-12.23
3.	Gram	KG	67.61	67.41	60.59	0.30	11.59
4.	Rice (Sela)	KG	43.02	43.02	40.17	0.00	7.09
5.	Bajra	KG	26.01	26.04	25.15	-0.12	3.42
6.	Jowar	KG	32.30	32.23	29.63	0.22	9.01
7.	Maize	KG	29.89	29.87	29.20	0.07	2.36
8	Atta	KG	33.36	33.31	32.34	0.15	3.15
9	Moong dal (Without husk)	KG	117.08	116.60	104.98	0.41	11.53
10	Urad dal (Without husk)	KG	125.78	126.11	111.14	-0.26	13.17
11	Arhar dal	KG	147.56	147.73	113.75	-0.12	29.72
12	Gram dal	KG	77.51	77.93	68.55	-0.54	13.07
13	Besan	KG	83.38	83.75	74.51	-0.44	11.90
14	Groundnut Oil	KG	192.02	194.85	189.11	-1.45	1.54
15	Mustard Oil	KG	134.25	136.14	162.36	-1.39	-17.31
16	Til Oil	KG	276.92	277.14	266.74	-0.08	3.82
17	Rapeseed Oil	KG	121.98	123.52	142.88	-1.25	-14.63
18	Vanaspati Ghee (p.Ltr.)	LTR.	123.59	124.08	134.95	-0.39	-8.42
19	Ghee (deshi)	KG	750.85	749.84	730.00	0.13	2.86
20	Chilies dry (Whole)	KG	288.98	291.52	276.04	-0.87	4.69
21	Gur	KG	47.80	47.88	42.70	-0.17	11.94
22	Sugar	KG	43.00	43.02	39.49	-0.05	8.89
23	Salt	KG	27.55	27.61	27.45	-0.22	0.36
24	Milk (Buff.) (p.Ltr.)	LTR.	61.52	61.38	58.70	0.23	4.80
25	Egg (Hen) Each	EACH	7.20	7.22	6.48	-0.28	11.11
26	Goat Meat	KG	584.28	585.68	554.51	-0.24	5.37
27	Potato	KG	19.95	20.43	20.85	-2.35	-4.32
28	Onion	KG	31.45	36.31	24.46	-13.38	28.58
29	Tomato	KG	35.25	31.62	26.21	11.48	34.49
30	Okra	KG	68.35	64.94	69.38	5.25	-1.48
31	Charcoal	5 KG	155.25	155.33	153.46	-0.05	1.17
32	Firewood	5 KG	46.02	45.71	44.58	0.68	3.23
33	Kerosene Oil (p.Ltr.)	LTR.	-	-	-	NA	NA
34	Washing Soap (Wheel Green 250 gms.)	PER CAKE	16.55	16.51	15.02	0.24	10.19
35	Toilet Soap (p. Cake) (Lux 100 gms.)	PER CAKE	29.35	29.27	28.45	0.27	3.16
36	Cigarette (10 in 1 packet)	PER PKT.	79.00	78.97	77.88	0.04	1.44
37	Biri (Per Bundle )	25 BIRI	24.06	24.06	23.97	0.00	0.38
38	Tea Leaf (per packet)	245 GRAM	128.01	127.87	127.39	0.11	0.49
39	Cooking Gas (L.P.G.) 14.2 Kg. Refill	PER CYLINDER	922.29	922.29	1071.63	0.00	-13.94

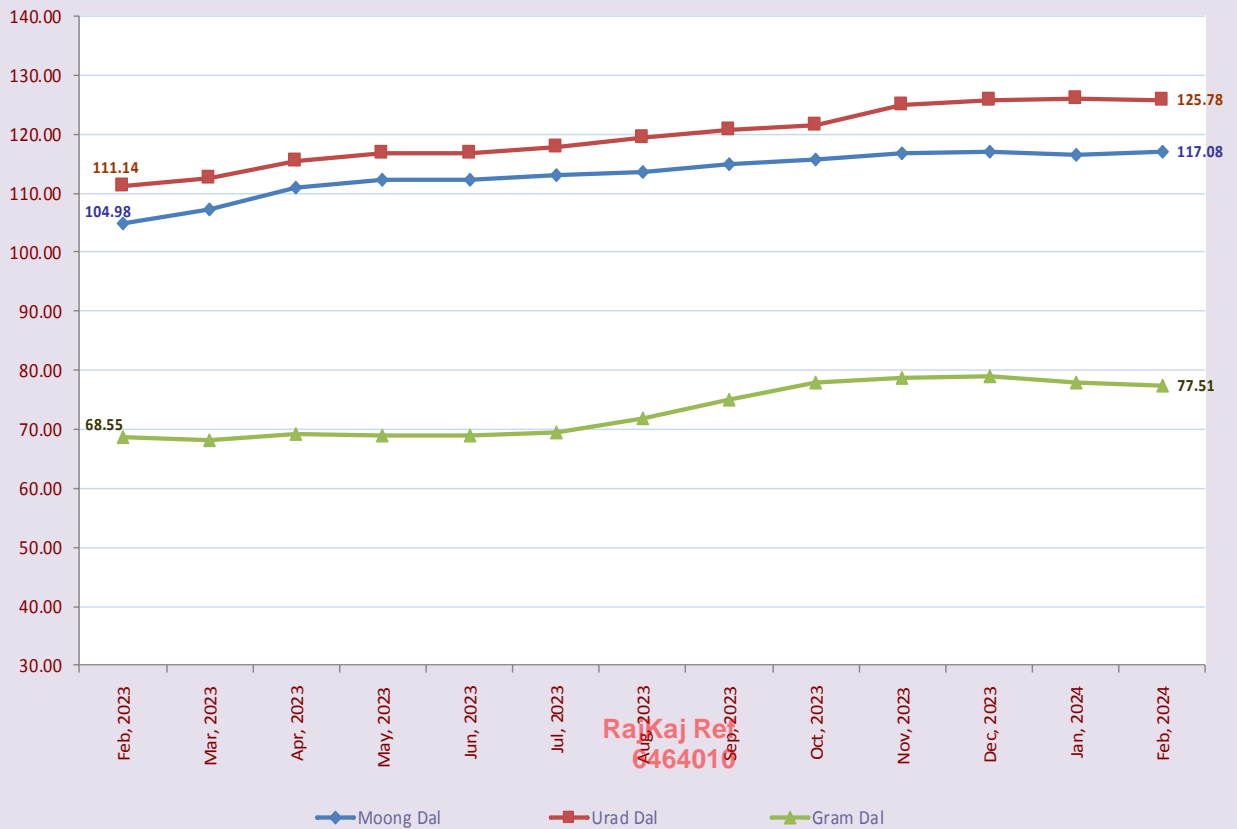
## TRENDS IN RETAIL PRICES OF ESSENTIAL COMMODITIES (Monthly Average Prices)

FEBRUARY, 2023 to FEBRUARY, 2024

### TRENDS IN RETAIL PRICES OF CEREALS



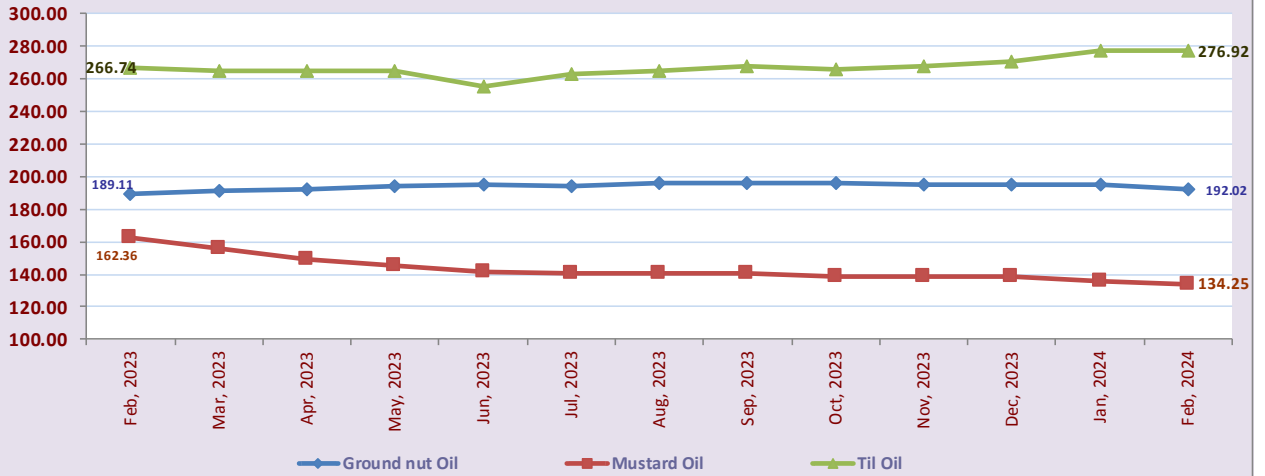
### TRENDS IN RETAIL PRICES OF PULSES



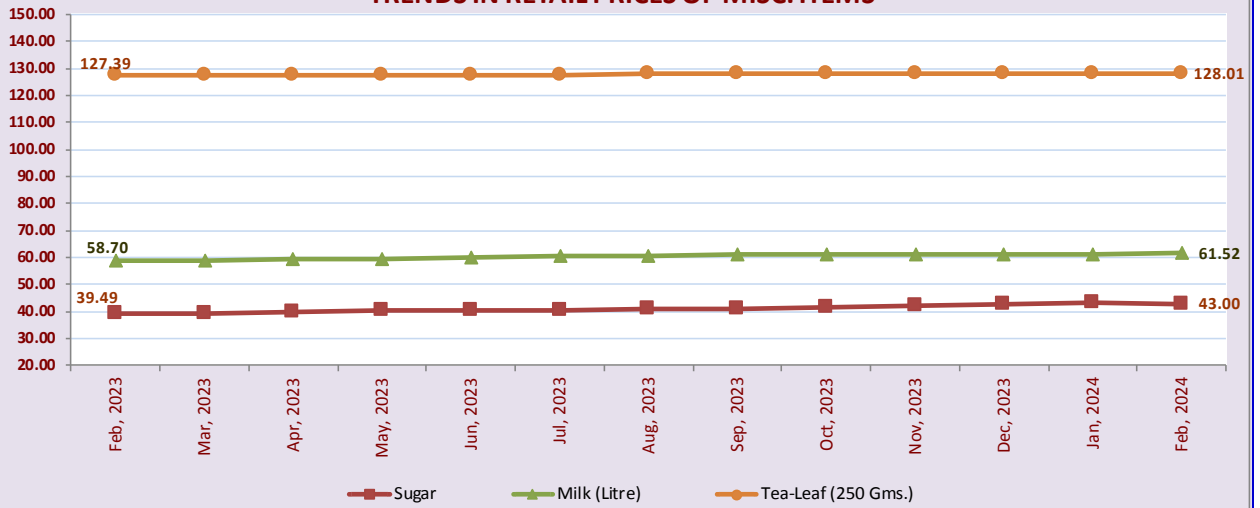
## TRENDS IN RETAIL PRICES OF ESSENTIAL COMMODITIES (Monthly Average Prices)

FEBRUARY, 2023 to FEBRUARY, 2024

### TRENDS IN RETAIL PRICES OF OIL



### TRENDS IN RETAIL PRICES OF MISC. ITEMS



### TRENDS IN RETAIL PRICES ONION & POTATO

